

**UW TASP**  
tele-antimicrobial stewardship program

echo

July 12, 2022

## Agenda

- Chloe: *SHEA Spring Conference Highlights*
- Case Discussions
- Open Discussion

# SHEA Highlights

- Risk Scores
- Behavior Change Wheel
- Spellberg-isms



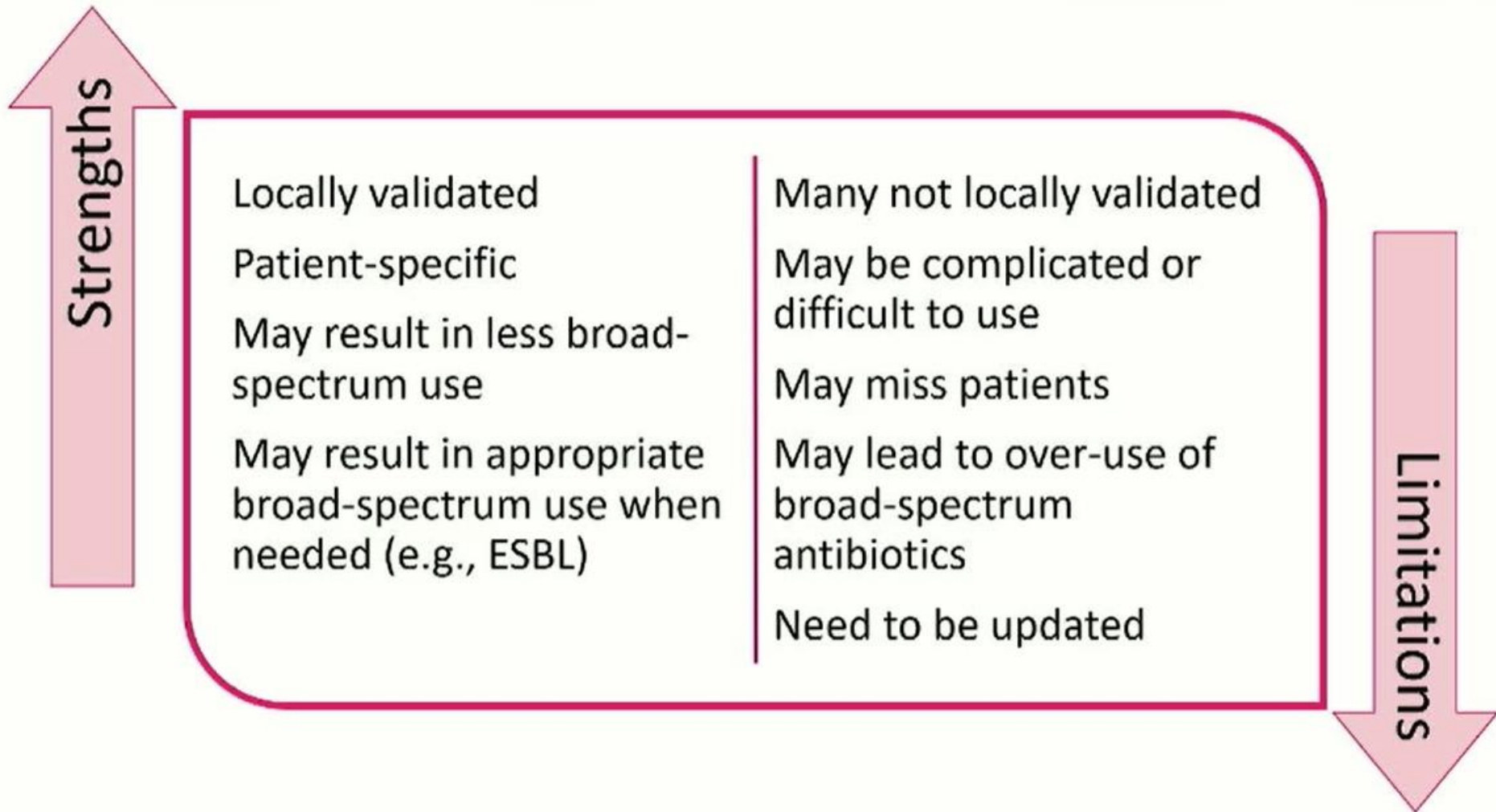
# Risk Scores

Let's Get Fancy with our  
Stewardship Interventions:  
Risk Scores

Hana Winders, PharmD  
Prisma Health-Midlands



# Risk Scores



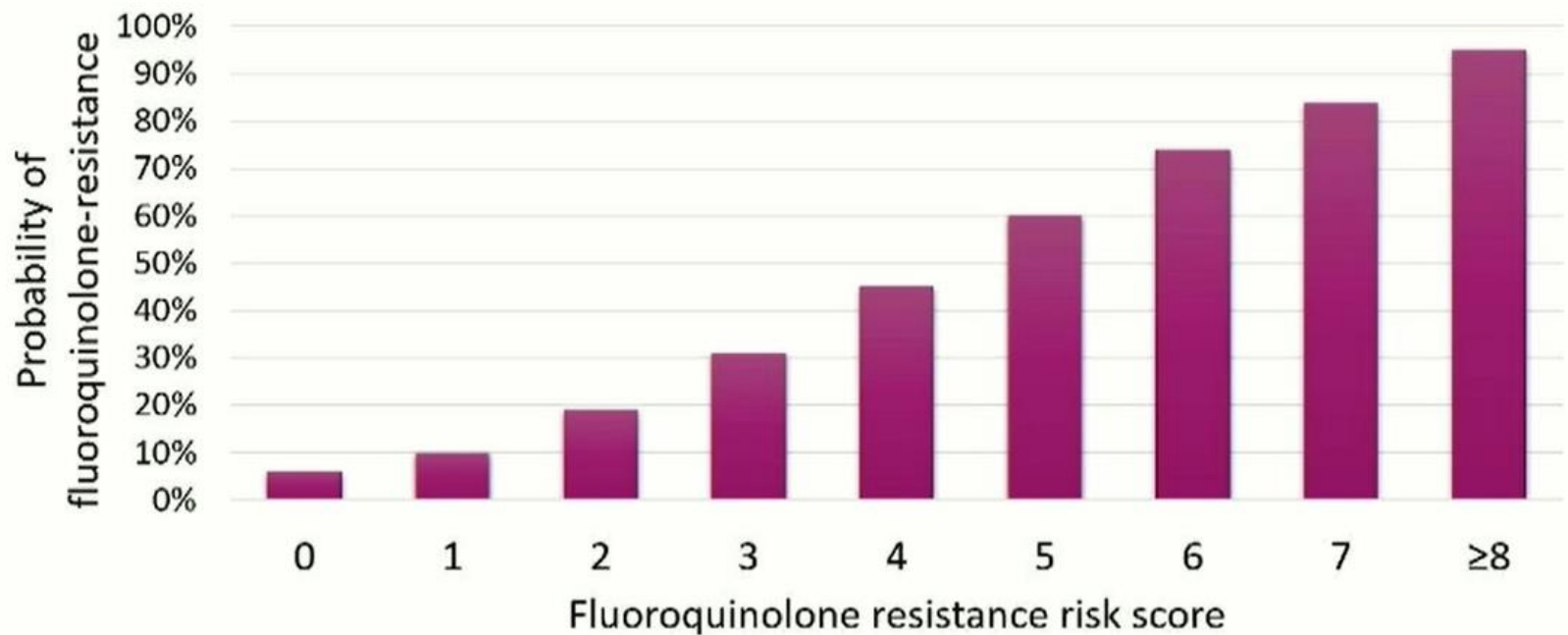
# Risk Scores

- For UTI Guidelines – using a risk score to predict FQ resistance
- Case control study looking at pts with GNR bacteremia (FQ non-susceptible vs. FQ susceptible)
- In regression model, found the independent variables significantly associated with FQ non-susceptible isolates and assigned risk scores based on the OR
  - Male (1 point)
  - Outpatient GI/GU procedure in last month (2 points)
  - SNF (3 points)
  - Prior FQ use (3-5 points, depending on time-frame)

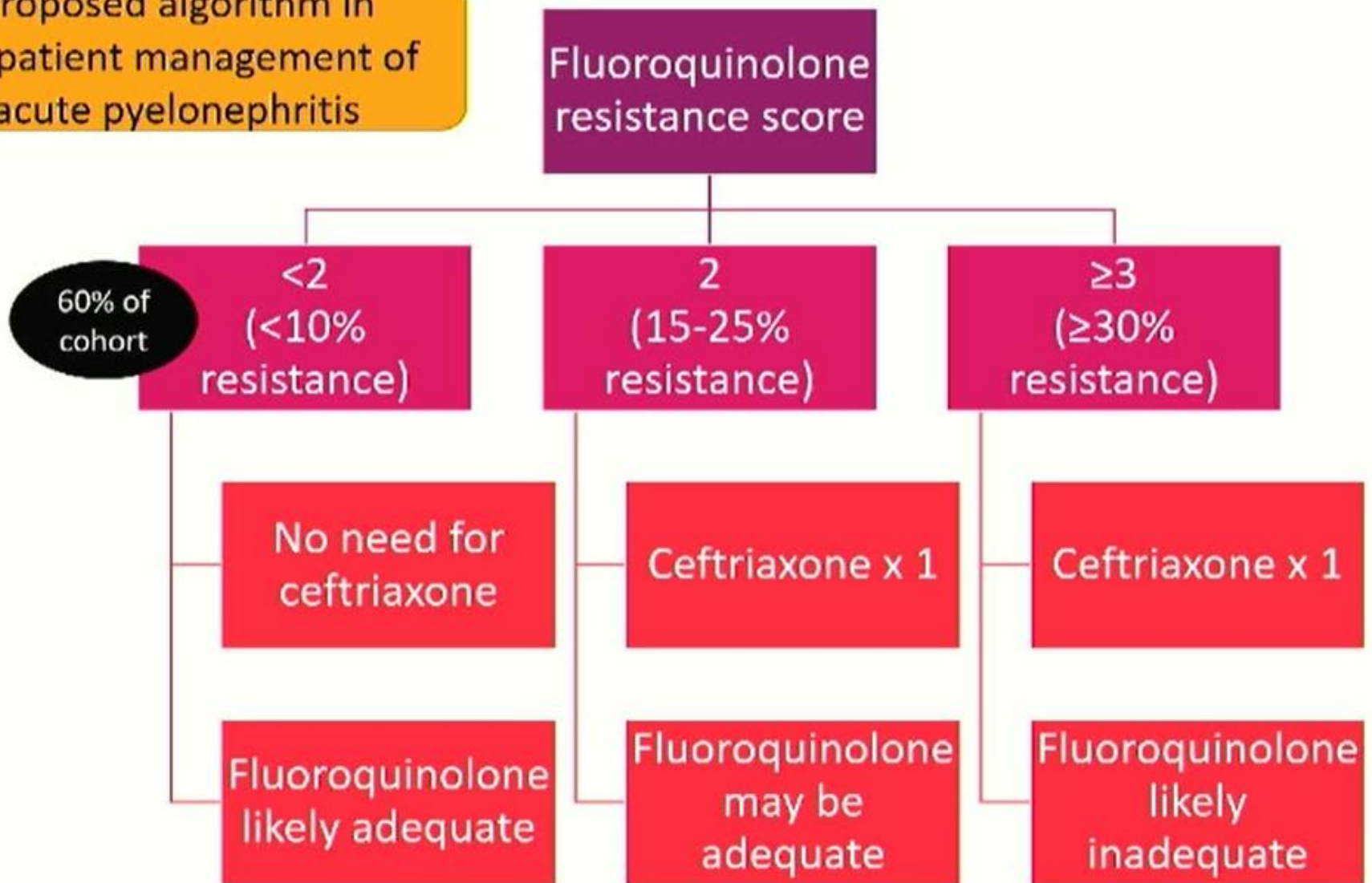


# Risk Scores

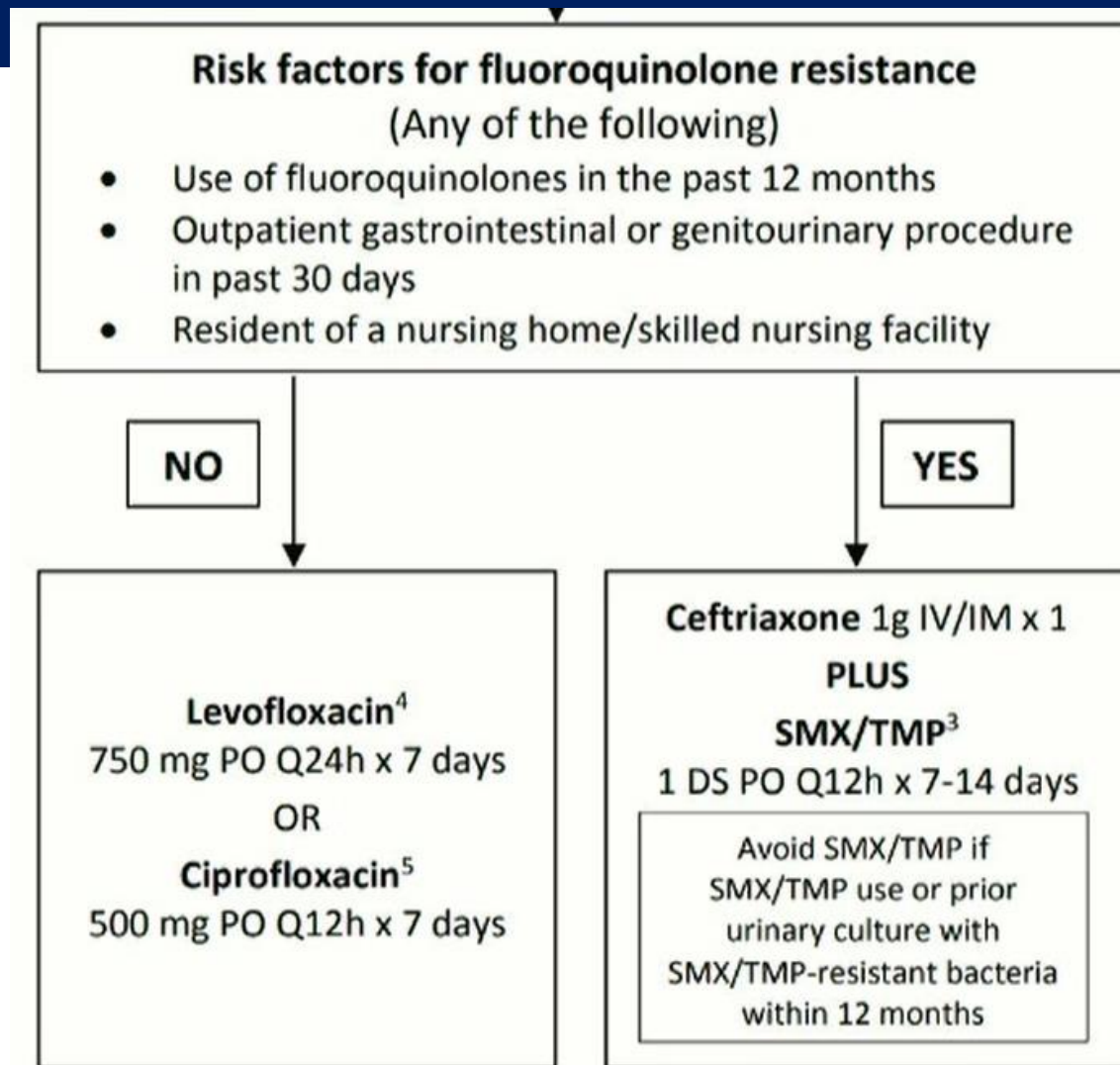
## Fluoroquinolone resistance risk score



Proposed algorithm in  
outpatient management of  
acute pyelonephritis



# Risk Scores

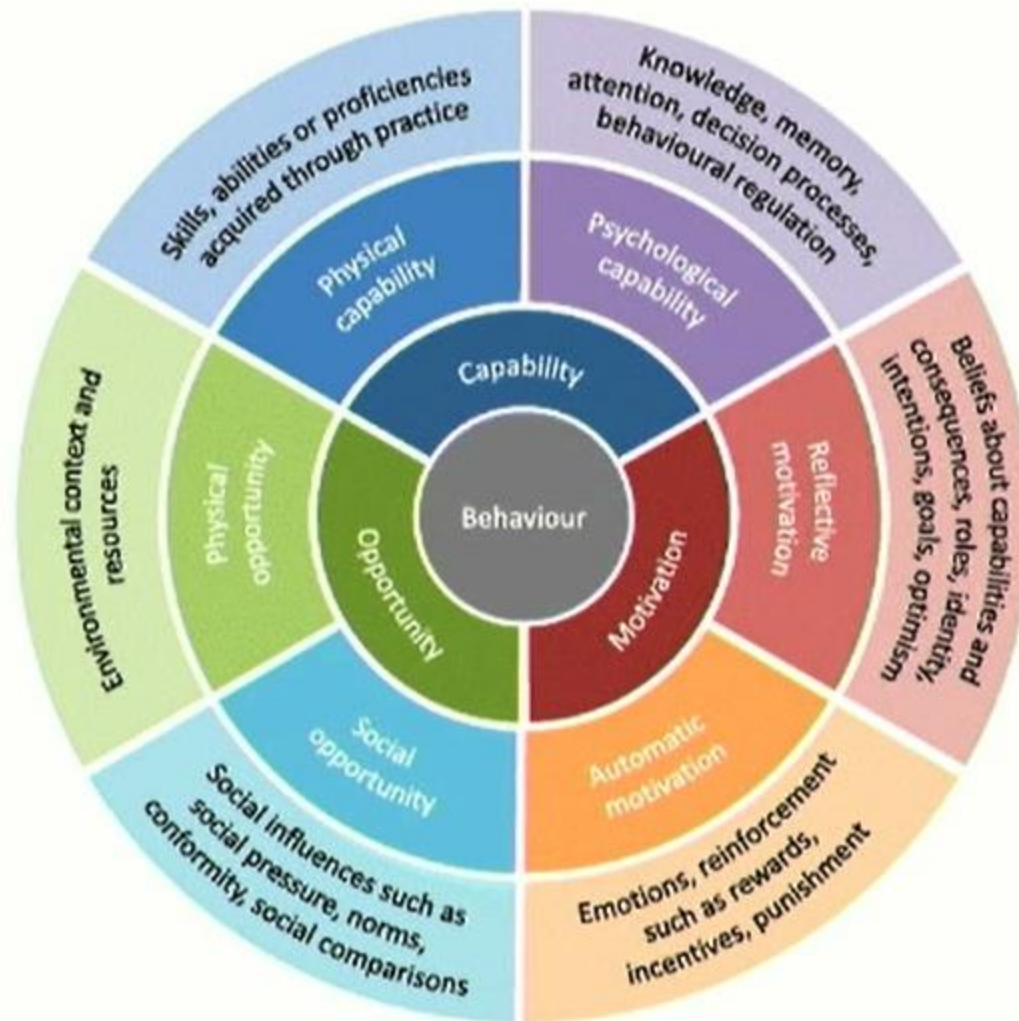


# Behavior Change Wheel

Big Beasts of Antimicrobial  
Stewardship: UTI

Sonali Advani, MBBS, MPH  
Duke University SOM





McDonagh, *et al.* Application of the COM-B model to barriers and facilitators to chlamydia testing in general practice for young people and primary care practitioners: a systematic review. *Implementation Sci* 13, 130 (2018).

10



# Spectrum of UTI

No UTI symptoms +  
negative urine culture

No UTI symptoms +  
positive urine culture

Non-specific  
symptoms, unable to  
express symptoms,  
chronic urologic issues  
+positive urine culture

Clear UTI symptoms,  
Positive Urine Culture

Barbara W Trautner, Urinary Tract Infections as a Continuum: Implications for Diagnostic and Antibiotic Stewardship, *Clinical Infectious Diseases*, Volume 72, Issue 8, 15 April 2021, Pages 1339–1341, <https://doi.org/10.1093/cid/ciaa280>

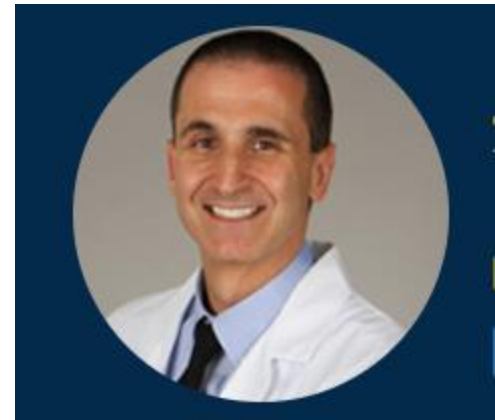


# Brad-Isms

The Dogmas of  
Stewardship: Moving the  
Needle

Brad Spellberg, MD

LAC+USC Medical Center



# Spellberg-Isms

## Or Is This About Fear?

---

- Abx are among the most potent psychoactive drugs in the pharmacopeia—they act on prescribers rather than patients
- When providers are afraid, they act instinctively, Abx sooth their fears
- This is about fear—and fear cannot be overcome by rational education
- It must be countered by psychology

9



# Spellberg-Isms

## The Psychology of Abx Prescription

<b>Heroin Withdrawal Sign/Symptom</b>	<b>Antibiotic Restriction Sign/Symptom</b>
Anger	Anger
Tachycardia	Tachycardia
Diaphoresis	Diaphoresis
Tremulousness	Tremulousness
Cursing	Cursing
Diarrhea	Diarrhea (of the mouth)
Potential Violence	Potential Violence



# Spellberg-Isms

## New Approaches

- Work with the psychology of fear
- Find psychological approaches to counteract overuse

14

