

RSV in 2022-23 and beyond

# Novel/emerging pathogen

- RSV

# RSV Incidence

- Annual surges with peaks in winter months
- 2.1 million annual outpatient visits and 50-100K hospitalizations in children <5yrs
- Up to 300 pediatric deaths annually
- Although hospitalizations in >65 not much higher, mortality 50x higher
- Nearly all children exposed by 2 y.o.
- Typical illness is uncomplicated URI marked by cough, congestion
- Small caliber airways create special challenge for young infants

# RSV Incidence

- During pandemic, dramatic reduction due to masking and other social changes
- Multiple birth cohorts with limited RSV specific immunity
- Notable increase in hospitalizations in children 6mos-2 y.o.
- Unprecedented strain on children's hospitals

In the 2022-2023 season, the overall rate of RSV-associated hospitalizations was 22.4 per 100,000 people.

Reset Filters

Rates by Age Group

Rates by Race/Ethnicity

Rates by Sex

Rates by Season

Rates by Site

## View

Monthly Rates

Weekly Rates

Cumulative Rates

## Filters

Season

All

Site

RSV-NET

Age Group

All

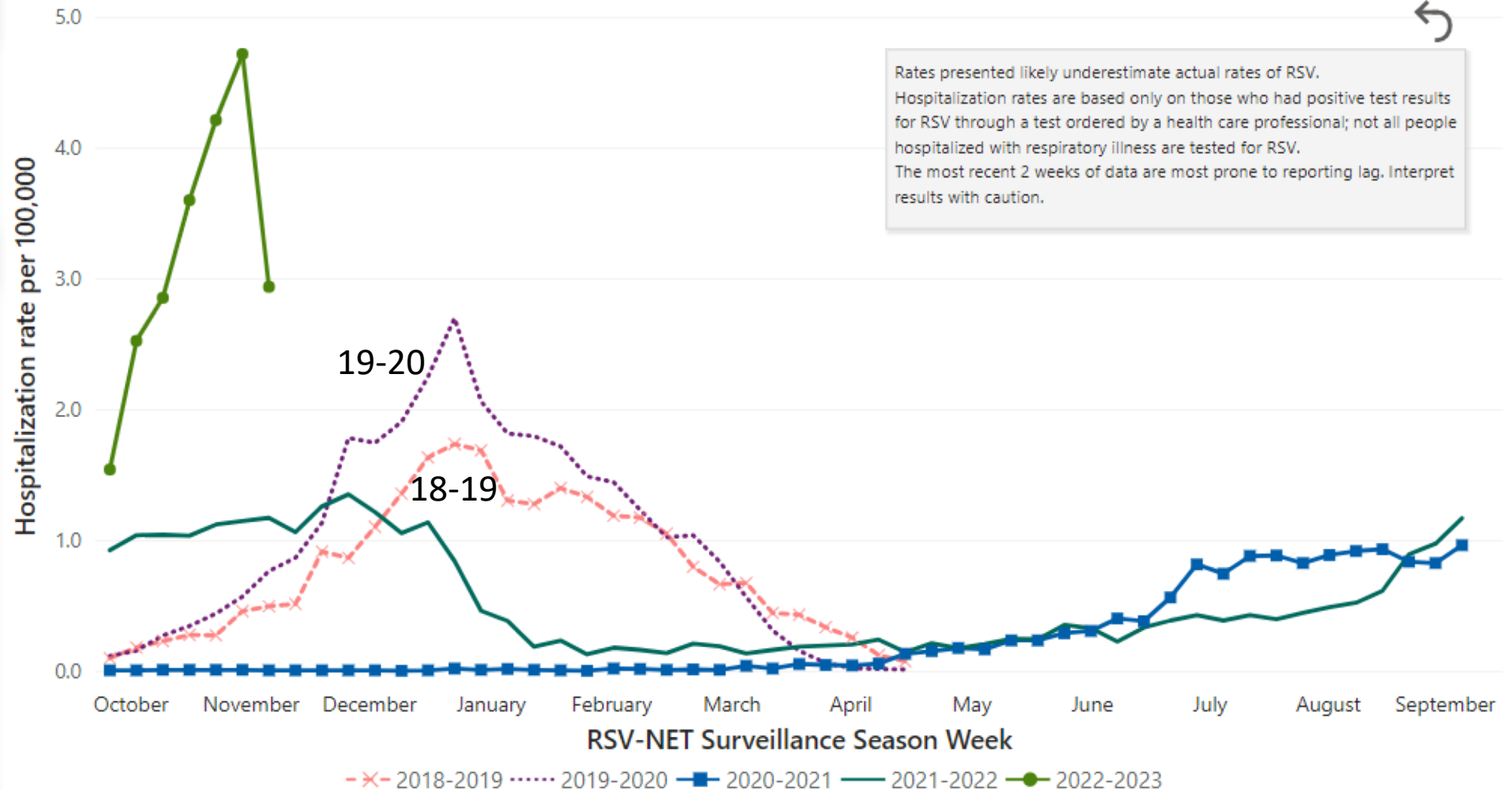
Race/Ethnicity

All

Sex

All

## Rates of RSV-Associated Hospitalization, all seasons



Data last updated: 11/23/2022 | Accessibility: Hover over graph area to display options such as show data as table and copy visual.

Note: AI/AN, American Indian or Alaska Native; A/PI, Asian and Pacific Islander.



Download Data

In the 2022-2023 season, the overall rate of RSV-associated hospitalizations was 22.4 per 100,000 people.

Reset Filters

Rates by Age Group

Rates by Race/Ethnicity

Rates by Sex

Rates by Season

Rates by Site

## View

Monthly Rates

Weekly Rates

Cumulative Rates

## Filters

Season

All

Site

RSV-NET

Age Group

All

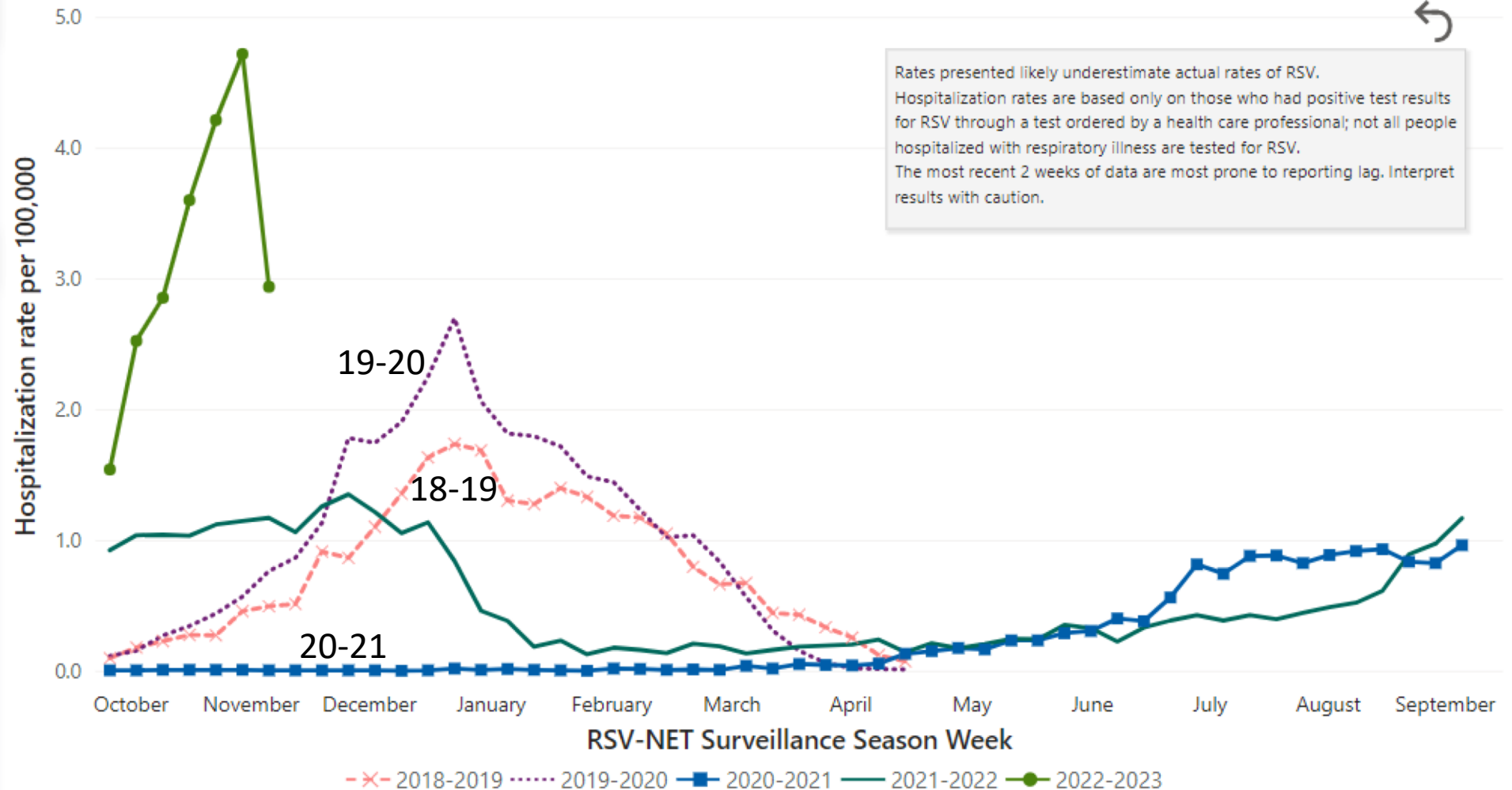
Race/Ethnicity

All

Sex

All

## Rates of RSV-Associated Hospitalization, all seasons



Data last updated: 11/23/2022 | Accessibility: Hover over graph area to display options such as show data as table and copy visual.

Note: AI/AN, American Indian or Alaska Native; A/PI, Asian and Pacific Islander.



Download Data

In the 2022-2023 season, the overall rate of RSV-associated hospitalizations was 22.4 per 100,000 people.

Reset Filters

Rates by Age Group

Rates by Race/Ethnicity

Rates by Sex

Rates by Season

Rates by Site

## View

Monthly Rates

Weekly Rates

Cumulative Rates

## Filters

Season

All

Site

RSV-NET

Age Group

All

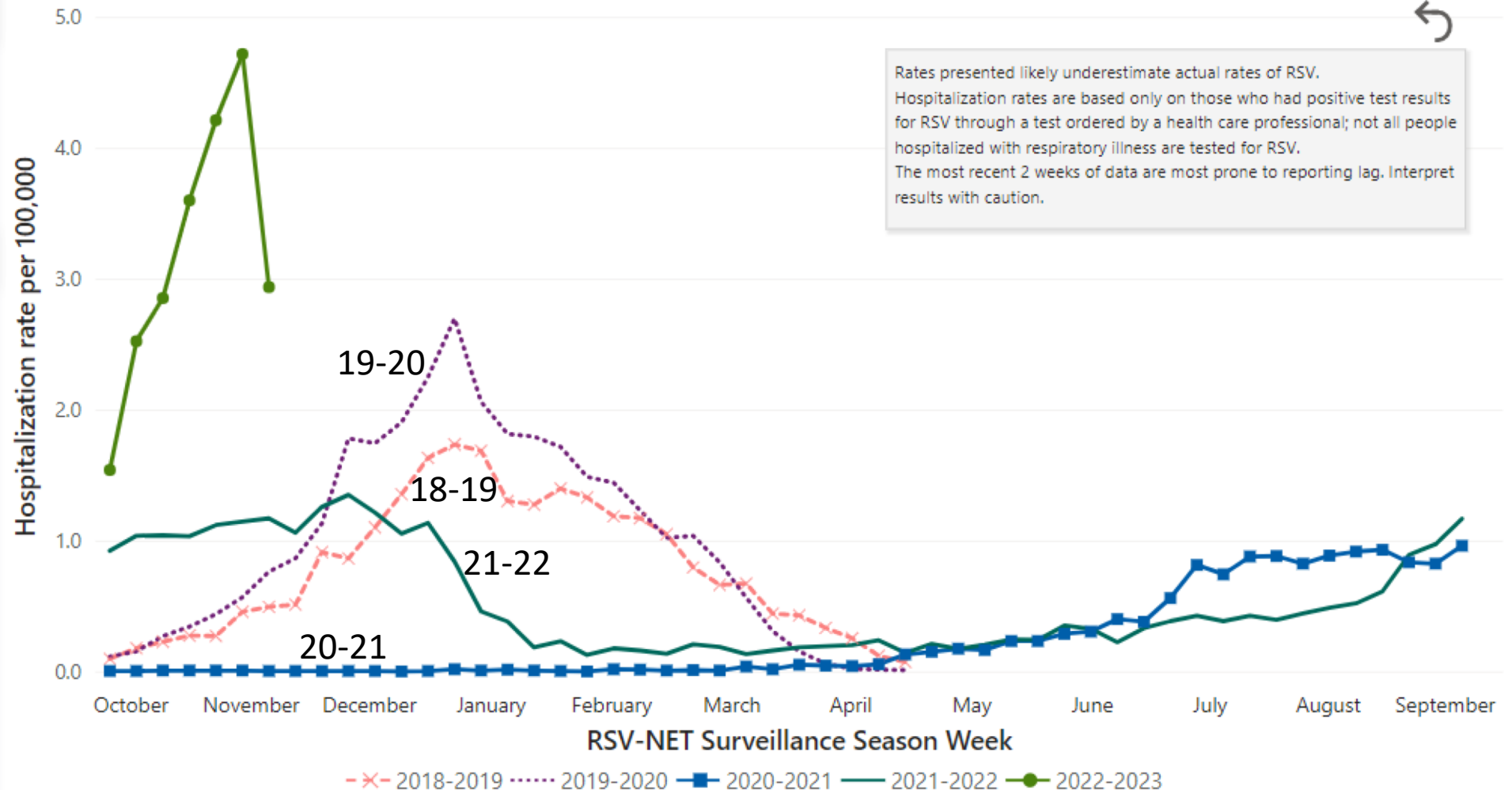
Race/Ethnicity

All

Sex

All

## Rates of RSV-Associated Hospitalization, all seasons



Data last updated: 11/23/2022 | Accessibility: Hover over graph area to display options such as show data as table and copy visual.

Note: AI/AN, American Indian or Alaska Native; A/PI, Asian and Pacific Islander.



Download Data

In the 2022-2023 season, the overall rate of RSV-associated hospitalizations was 22.4 per 100,000 people.

Reset Filters

Rates by Age Group

Rates by Race/Ethnicity

Rates by Sex

Rates by Season

Rates by Site

#### View

Monthly Rates

Weekly Rates

Cumulative Rates

#### Filters

Season

All

Site

RSV-NET

Age Group

All

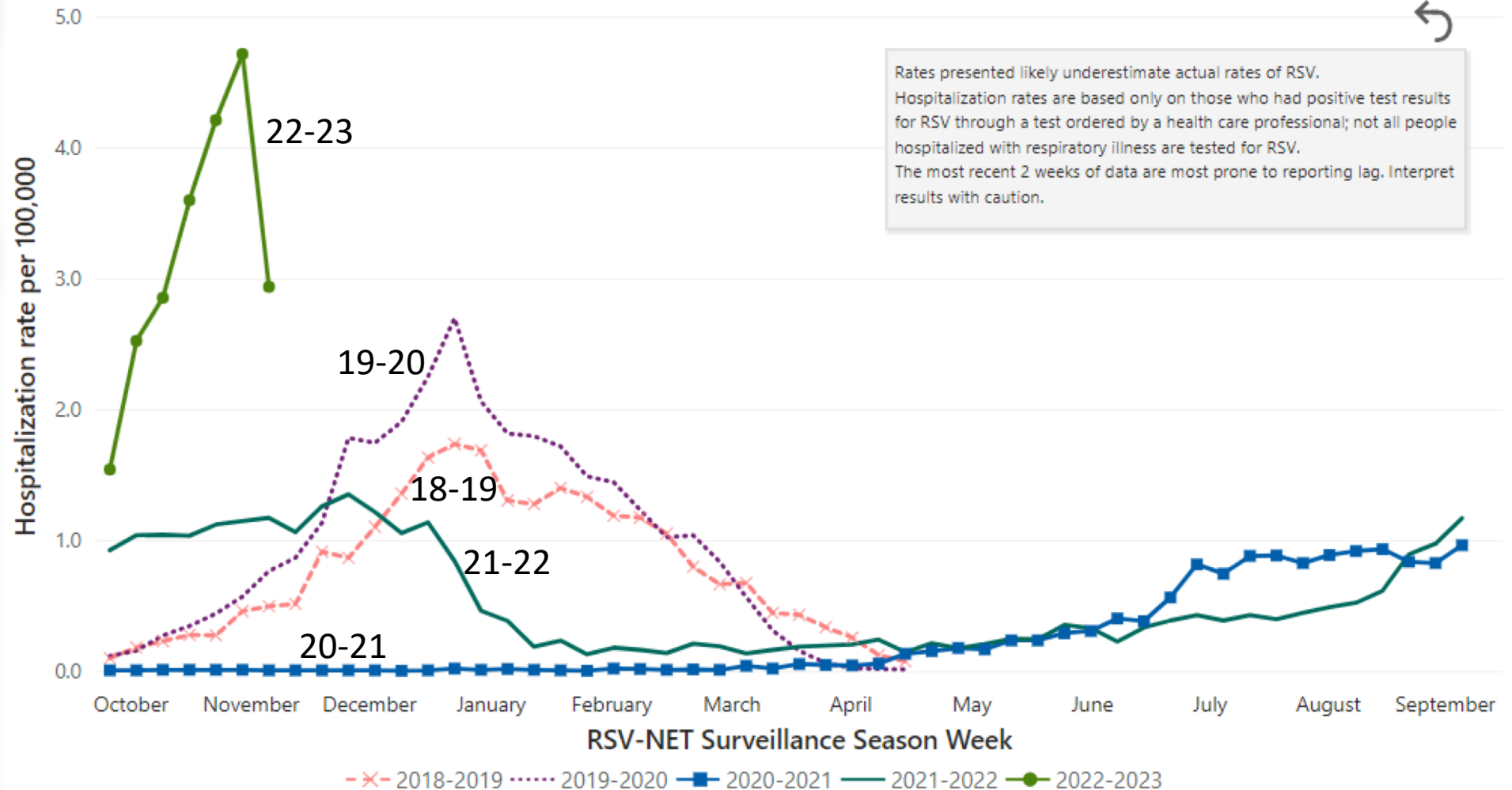
Race/Ethnicity

All

Sex

All

#### Rates of RSV-Associated Hospitalization, all seasons



Data last updated: 11/23/2022 | Accessibility: Hover over graph area to display options such as show data as table and copy visual.

Note: AI/AN, American Indian or Alaska Native; A/PI, Asian and Pacific Islander.



Download Data



In the 2022-2023 season, the overall rate of RSV-associated hospitalizations was 22.4 per 100,000 people.

Reset Filters

Rates by Age Group

Rates by Race/Ethnicity

Rates by Sex

Rates by Season

Rates by Site

## View

Monthly Rates

Weekly Rates

Cumulative Rates

## Filters

Season

2022-2023 (All Ages) ▾

Site

All ▾

Age Group

All ▾

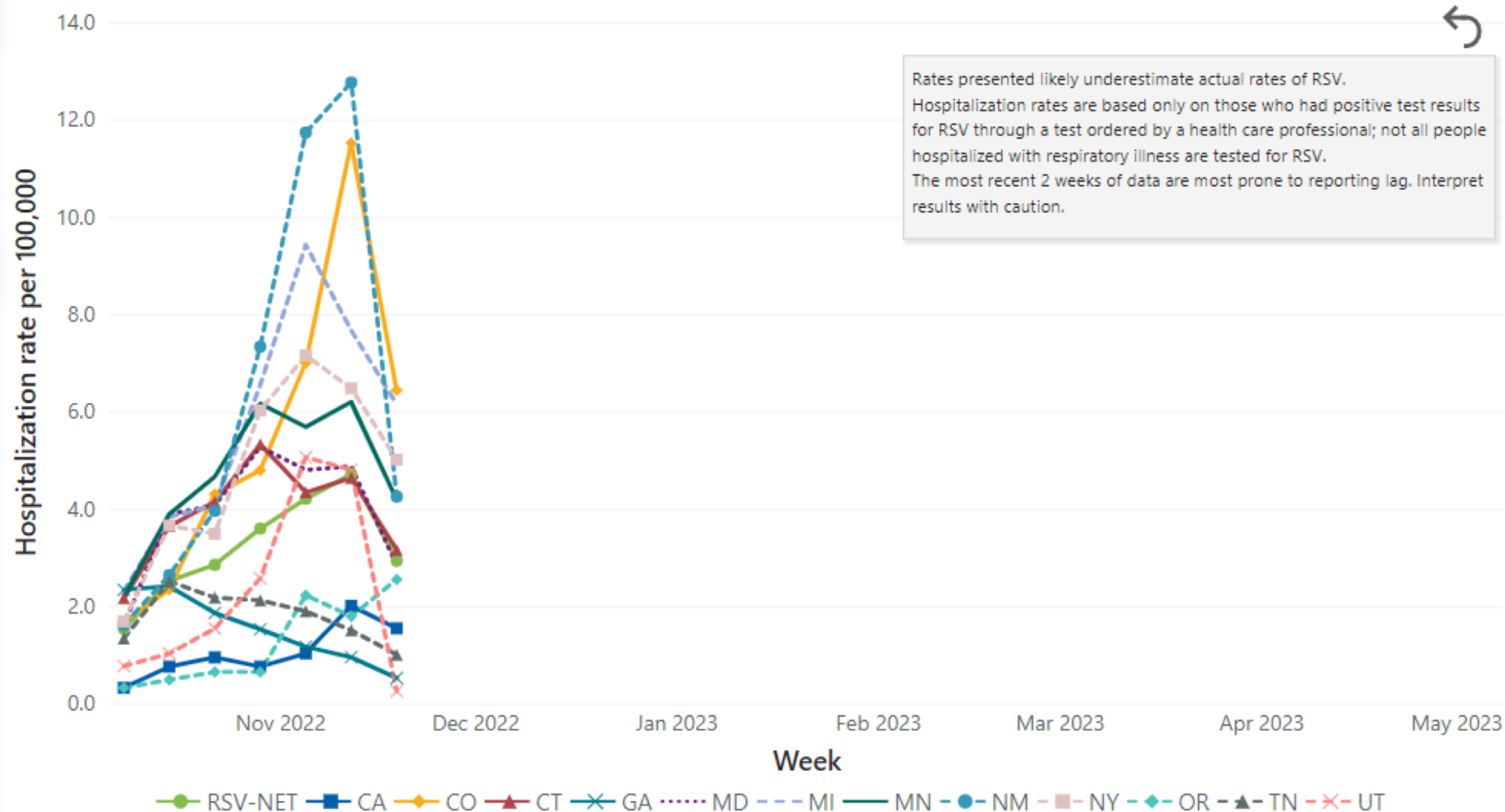
Race/Ethnicity

All ▾

Sex

All ▾

## Rates of RSV-Associated Hospitalization, 2022-2023 (All ages)



Data last updated: 11/23/2022 | Accessibility: Hover over graph area to display options such as show data as table and copy visual.

Note: AI/AN, American Indian or Alaska Native; A/PI, Asian and Pacific Islander; CA, California; CO, Colorado; CT, Connecticut; GA, Georgia; MD, Maryland; MI, Michigan; MN, Minnesota; NM, New Mexico; NY, New York; OR, Oregon; TN, Tennessee; UT, Utah.



Download Data

In the 2022-2023 season, the overall rate of RSV-associated hospitalizations was 22.4 per 100,000 people.

Reset Filters

Rates by Age Group

Rates by Race/Ethnicity

Rates by Sex

Rates by Season

Rates by Site

## View

Monthly Rates

Weekly Rates

Cumulative Rates

## Filters

### Season

2022-2023 (All Ages) ▾

### Site

RSV-NET ▾

### Age Group

Multiple selections ^

☐ Select all

☐ All

☐ 0-17 (Children)

☐ 0-4 years

☒ ----0-<6 months

☒ ----6-<12 months

☒ ----1-<2 years

☒ ----2-4 years

☒ 5-17 years

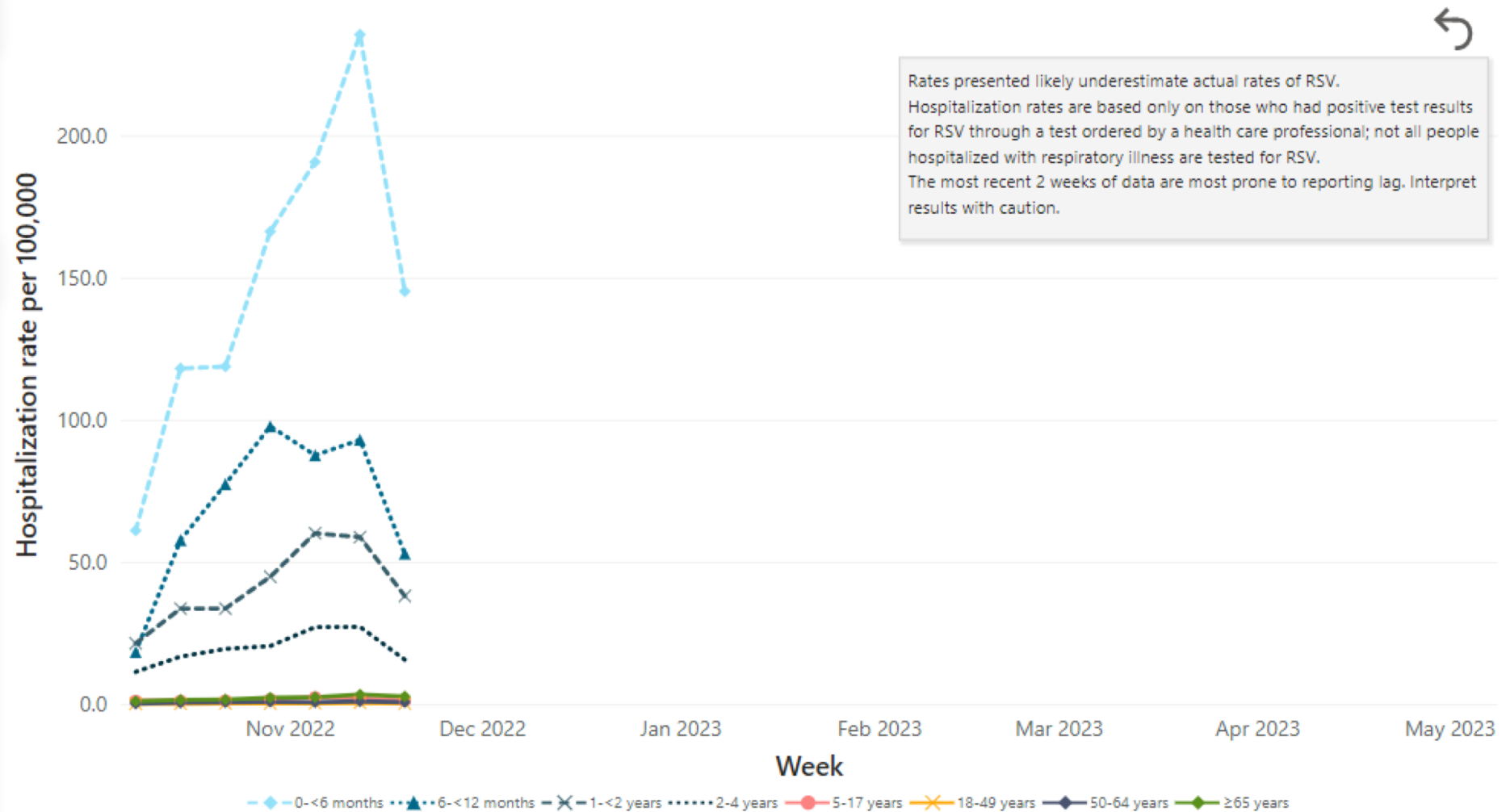
☐ ----5-11 years

☐ 12-17 years



Download Data

Rates of RSV-Associated Hospitalization, 2022-2023 (All ages)

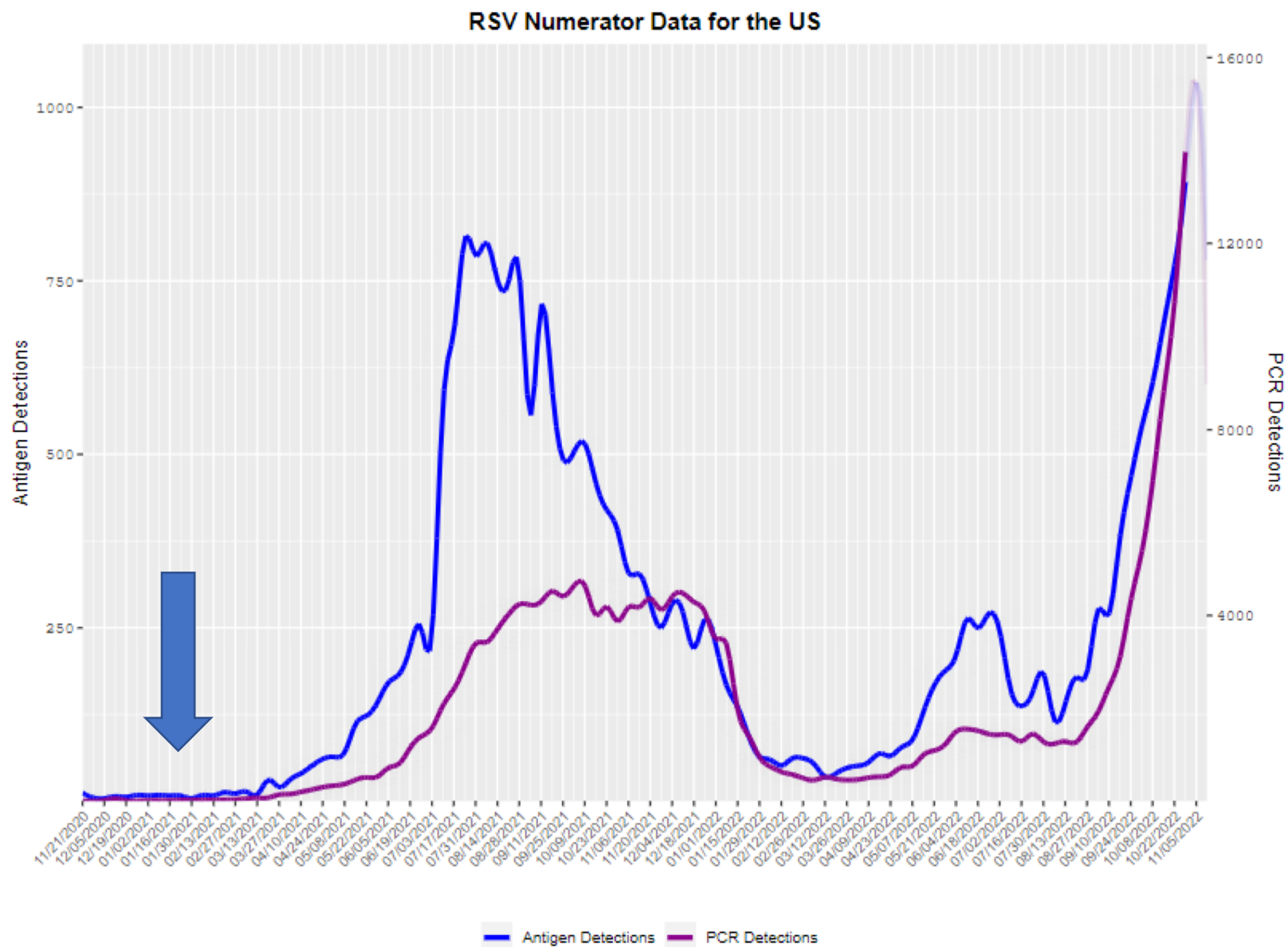


Data last updated: 11/23/2022 | Accessibility: Hover over graph area to display options such as show data as table and copy visual.

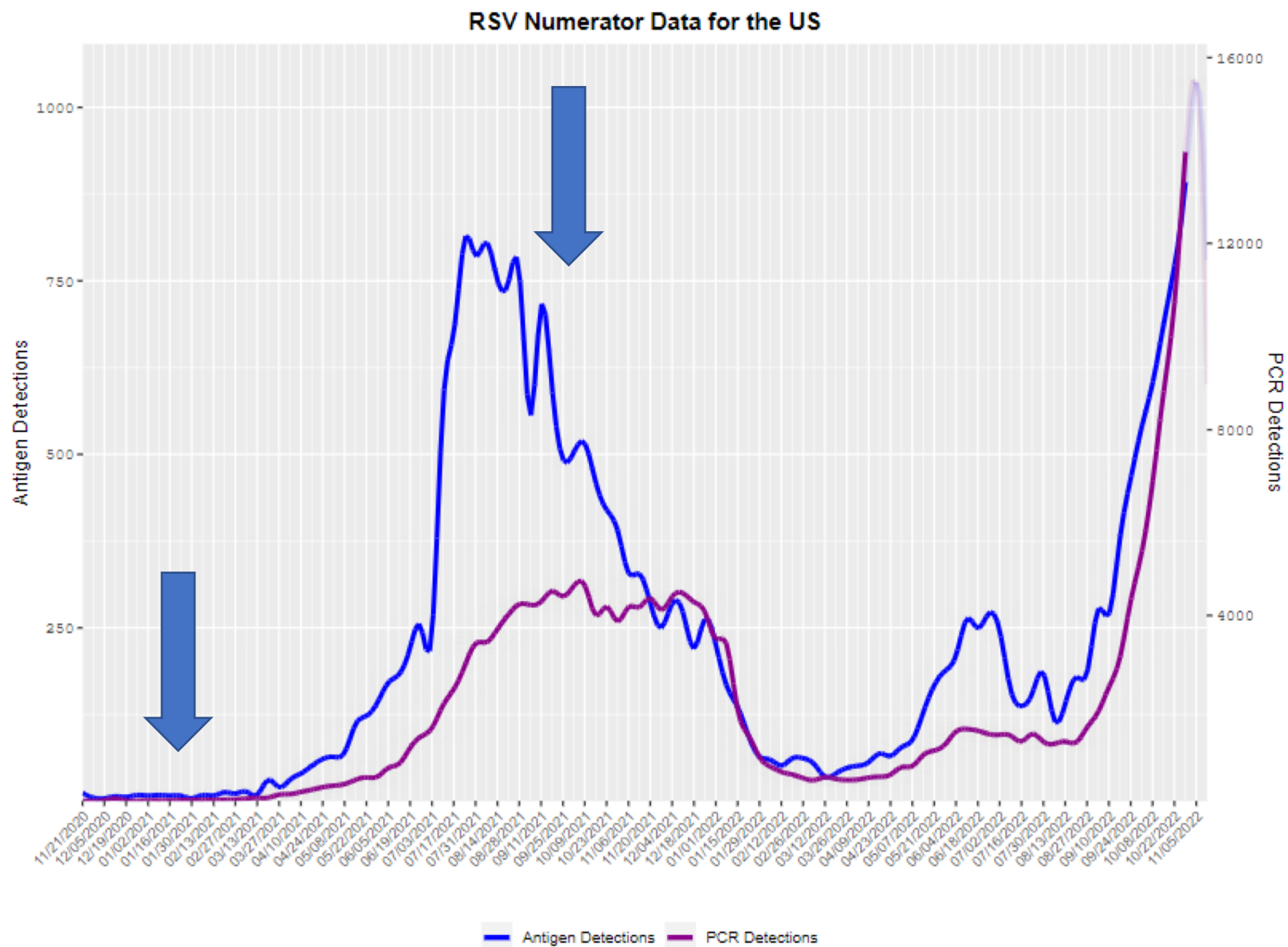
# Prevention Strategies

- Masks, distancing, hand washing
- Palivizumab
- Multiple promising new products (vaccines) in late stages – possibly as soon as next year

# Detections



# Detections



# Detections

