



*September 1, 2020*

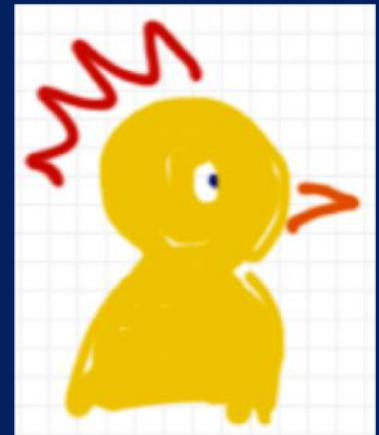
## **Announcements**

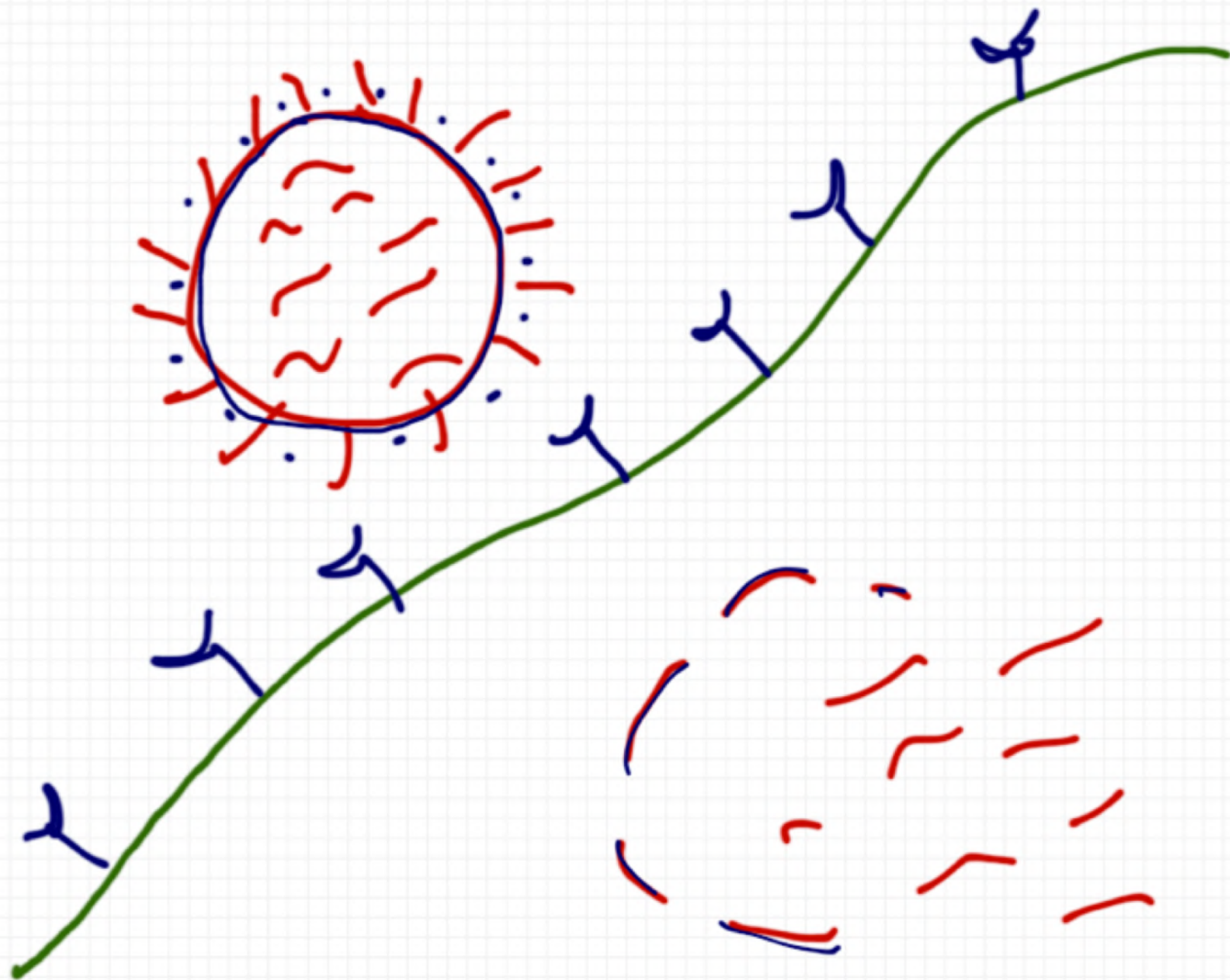
**Didactic: What's new in flu  
Cases & Questions**

*September 17th, 2019*

## **Didactic**

- What's New in Influenza





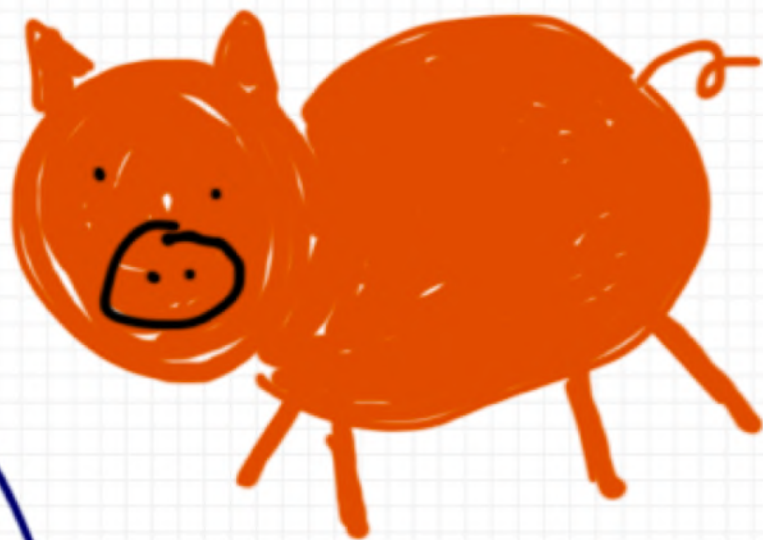
Influenza A

drifting + Shifting

Influenza B

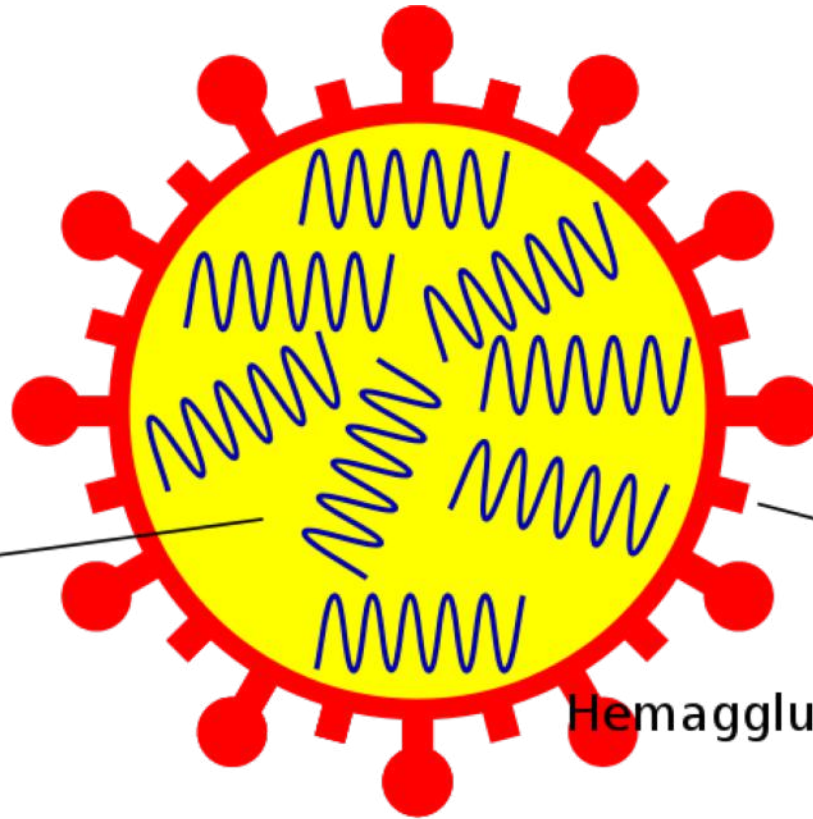
only drifting





Flu A





Type of  
nuclear  
material

Hemagglutinin

Neuraminidase

A/Fujian/411/2002 (H3N2)

Virus  
type

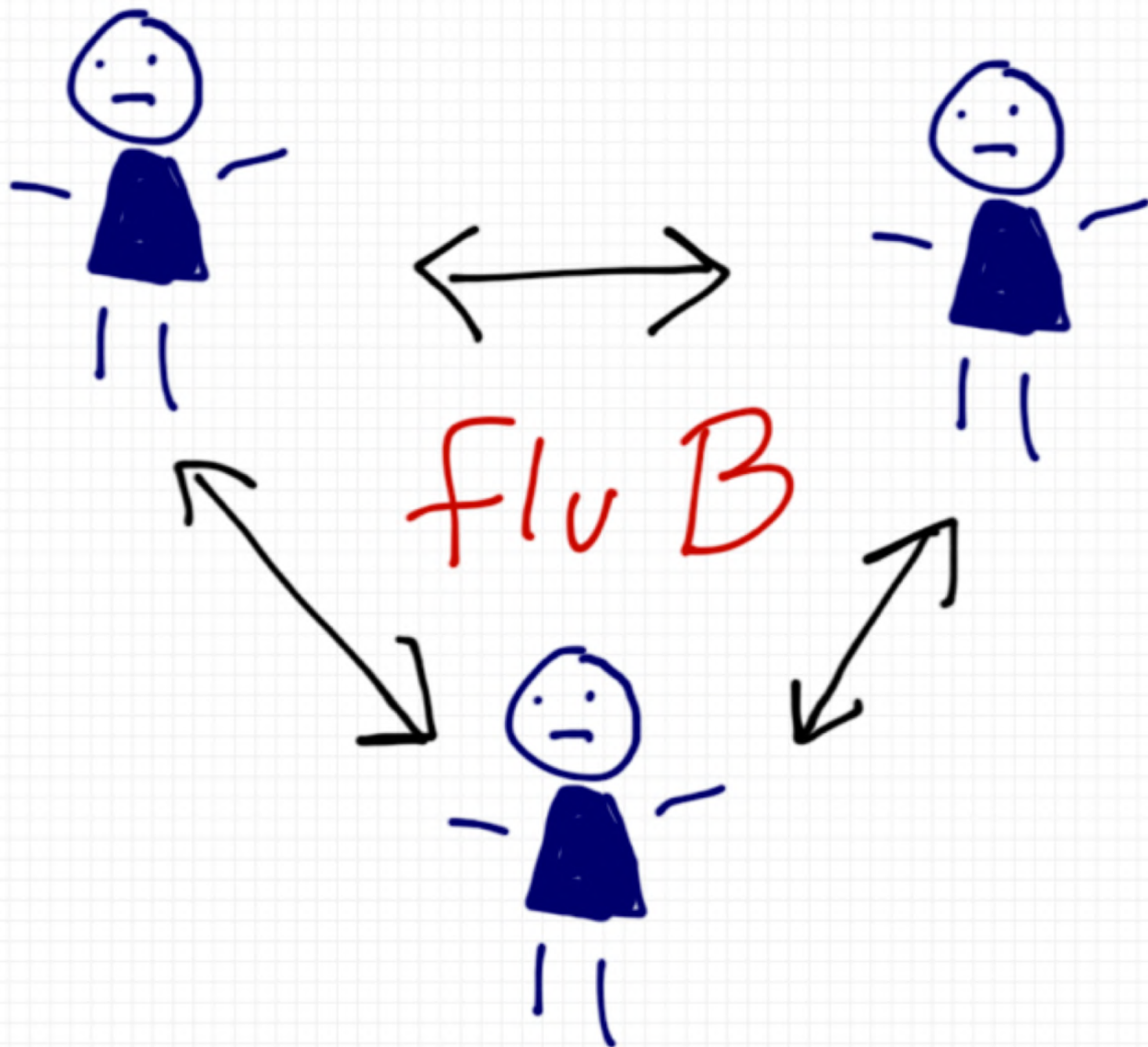
Geographic  
origin

Strain  
number

Year of  
isolation

Virus  
subtype





CDC estimates\* that, from **October 1, 2019**, through **April 4, 2020**, there have been:

39,000,000 – 56,000,000  
flu **illnesses**



18,000,000 – 26,000,000  
flu **medical visits**



410,000 – 740,000  
flu **hospitalizations**



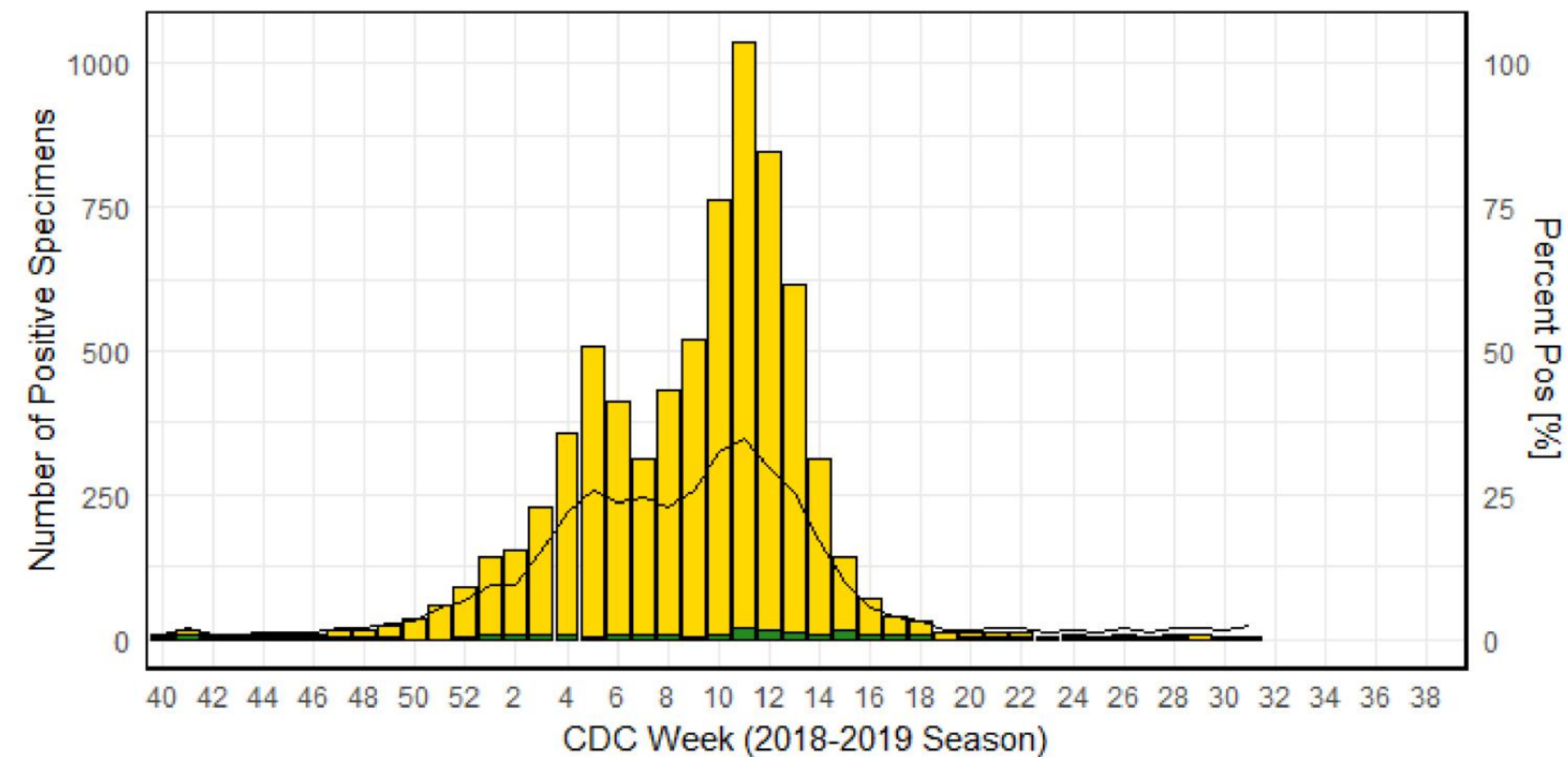
24,000 – 62,000  
flu **deaths**



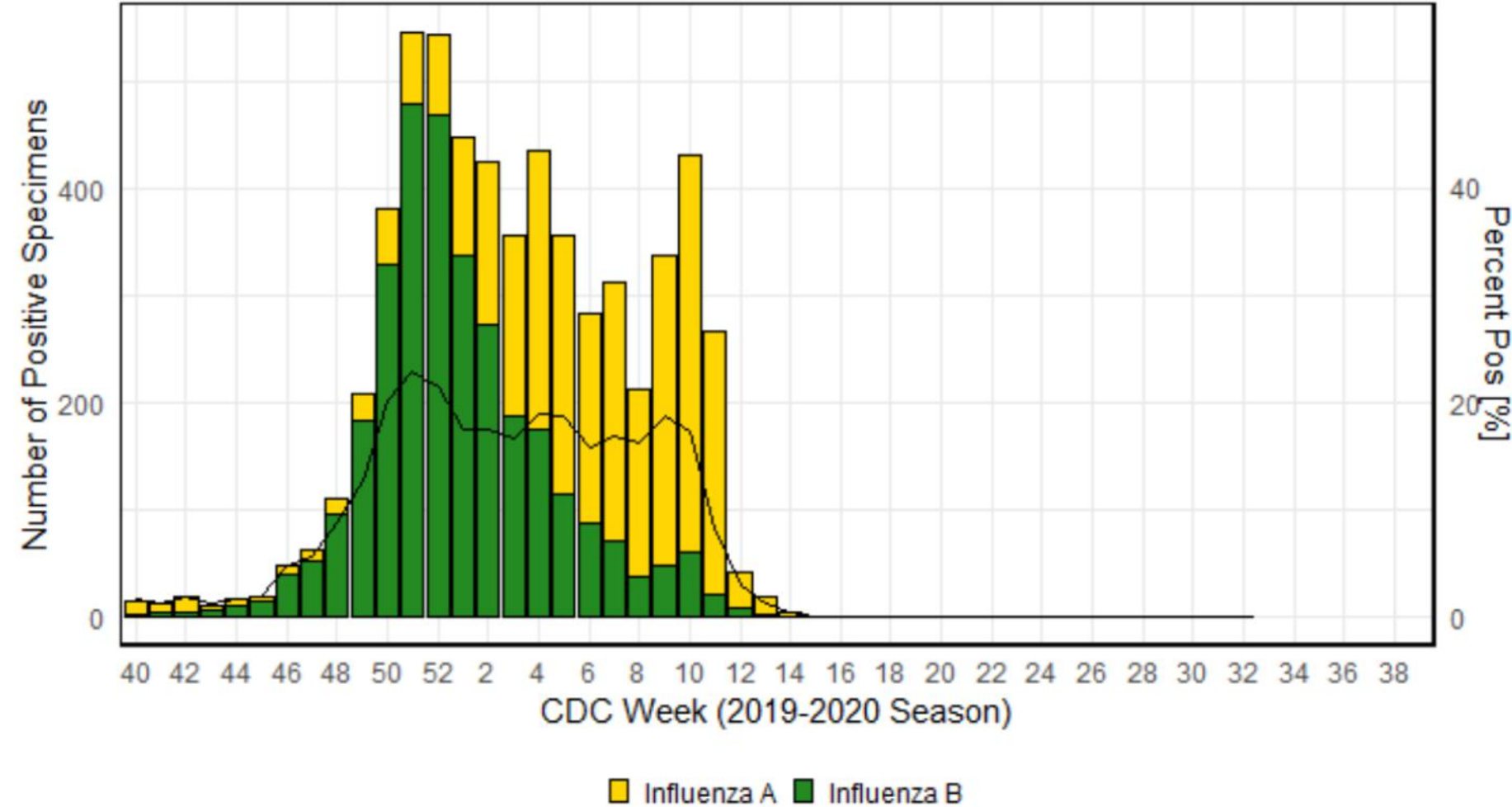
NOTE: The week of April 4 was the last week in-season influenza burden estimates will be provided for the 2019-2020 season.



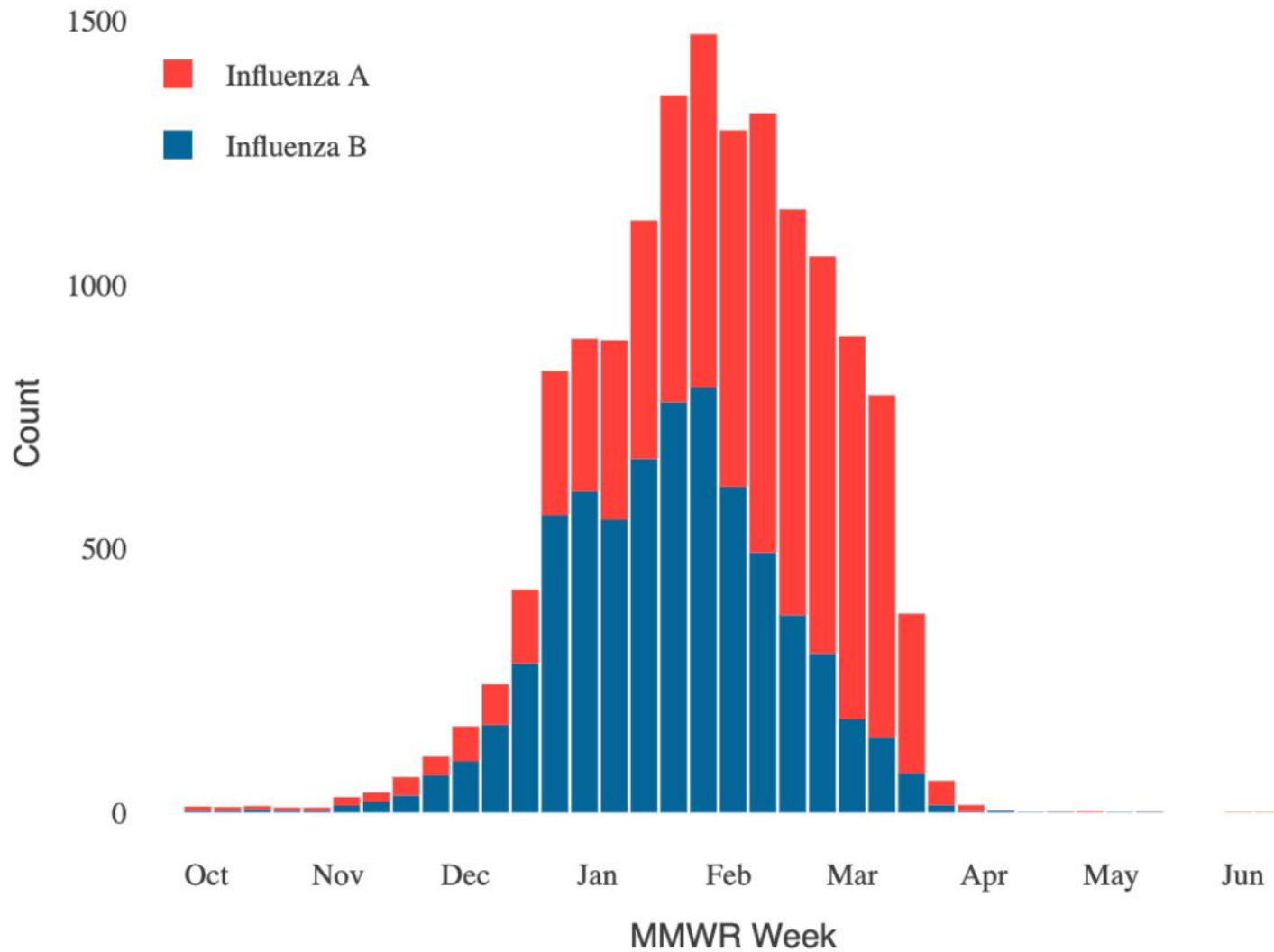
**Figure 2: Influenza Positive Tests Reported to CDC, WA Commercial Laboratories**



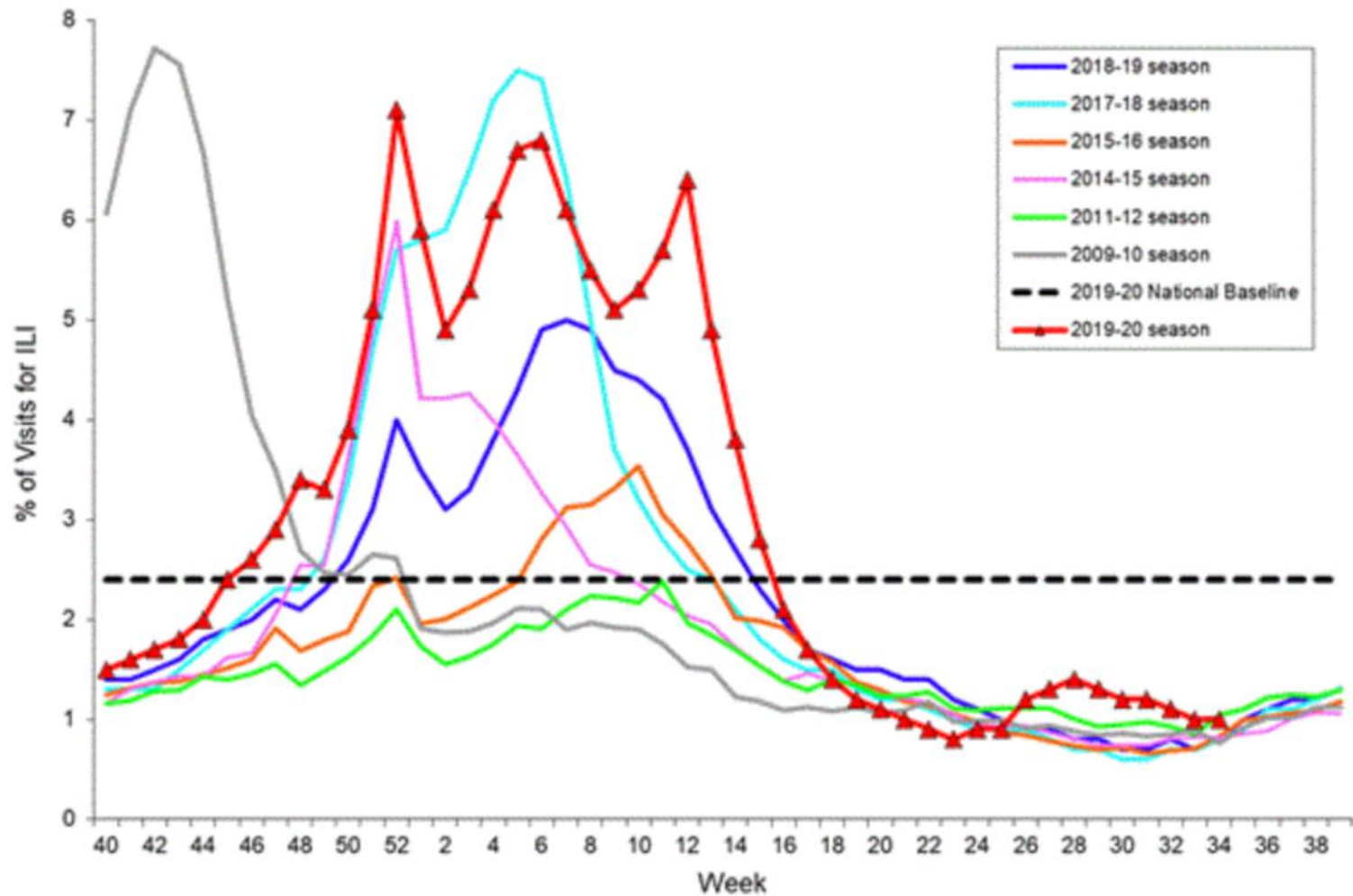
**Figure 2: Influenza Positive Tests Reported to CDC, WA Commercial Laboratories**



## Influenza Virus Identification



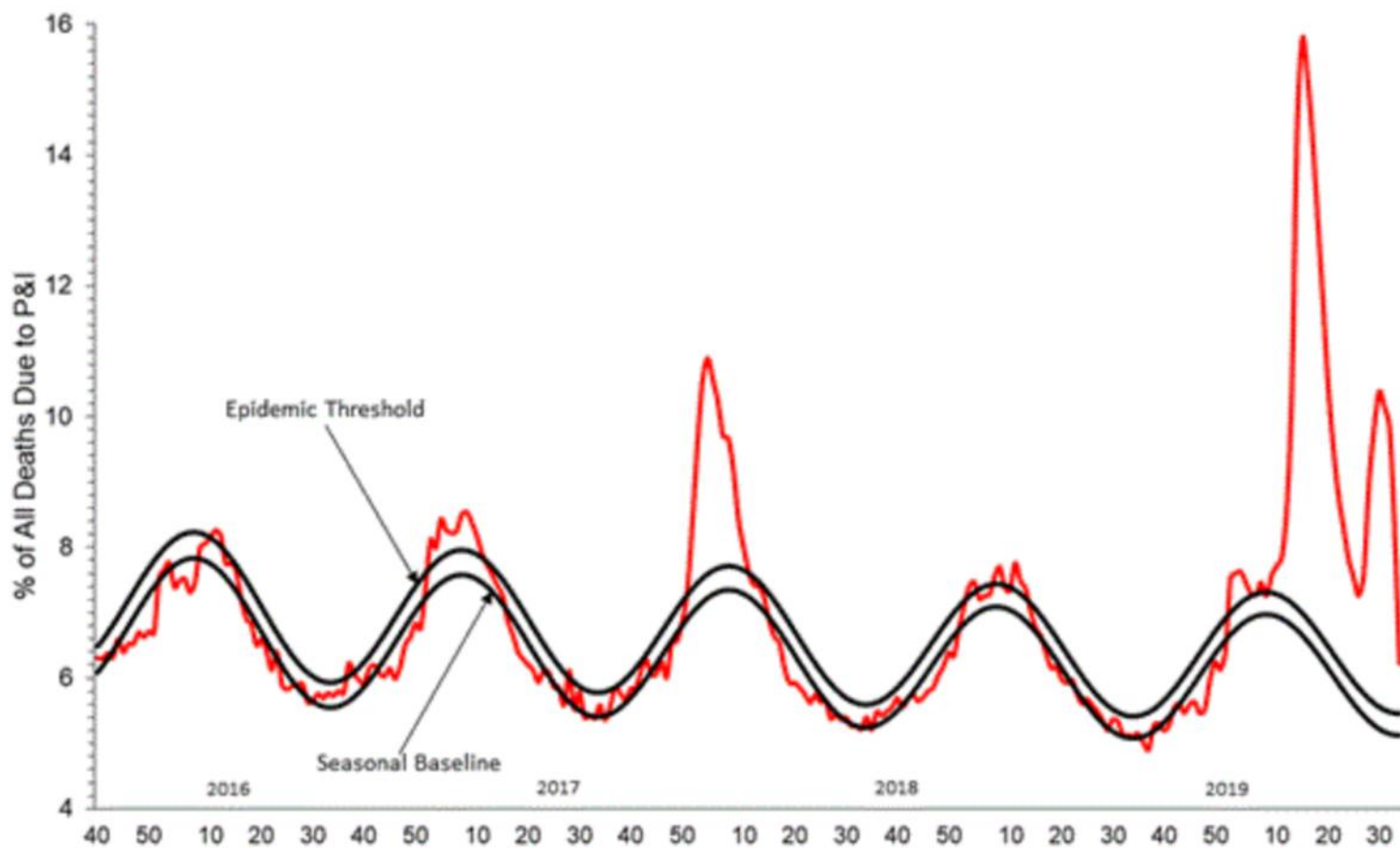
Percentage of Visits for Influenza-like Illness (ILI) Reported by the U.S. Outpatient Influenza-like Illness Surveillance Network (ILINet), Weekly National Summary, 2019-2020 and Selected Previous Seasons





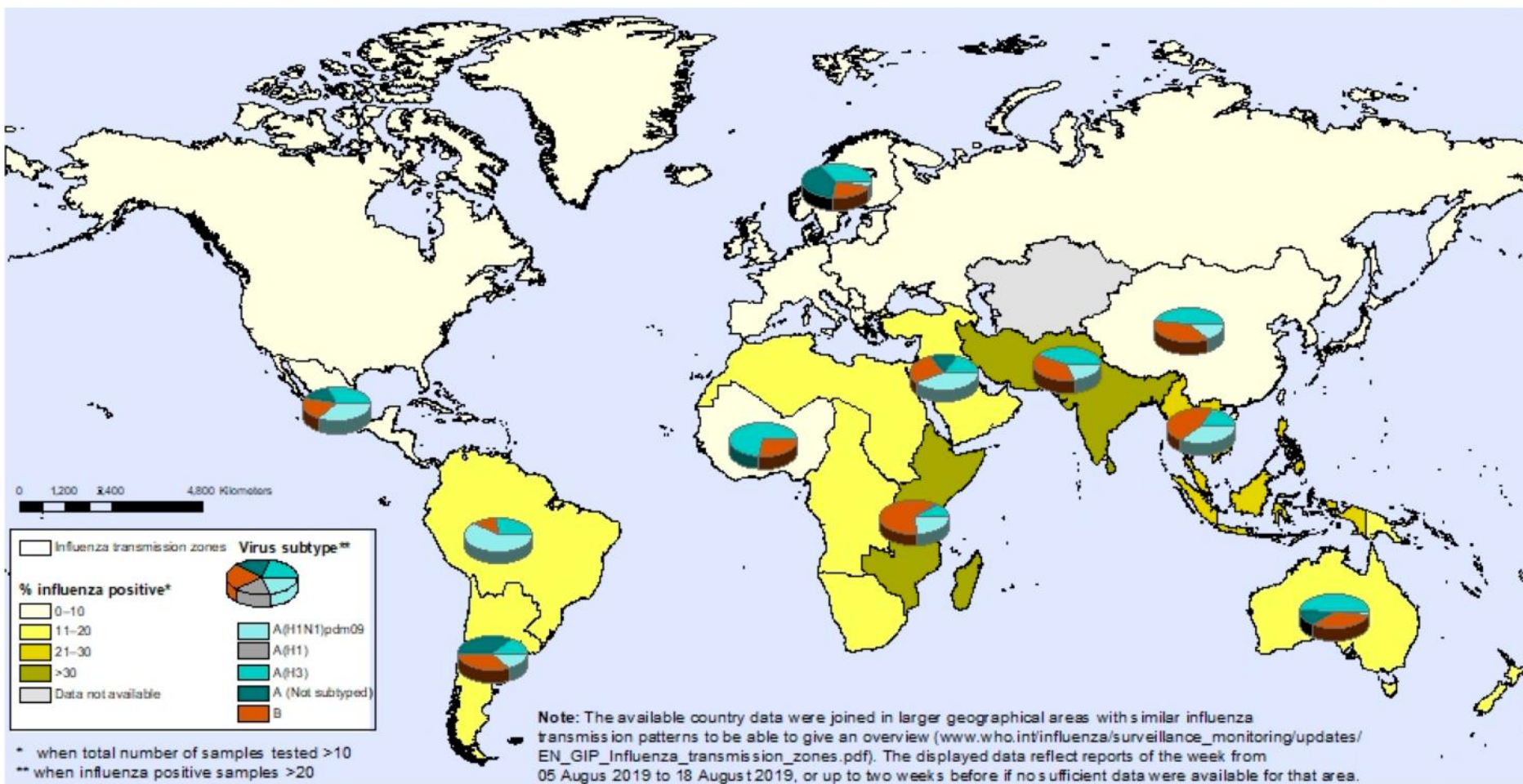
# Pneumonia and Influenza Mortality from the National Center for Health Statistics Mortality Surveillance System

Data through the week ending August 22, 2020, as of August 27, 2020



# Percentage of respiratory specimens that tested positive for influenza By influenza transmission zone

Status as of 30 August 2019



The boundaries and names shown and the designations used on this map do not imply the expression of any opinion whatsoever on the part of the World Health Organization concerning the legal status of any country, territory, city or area or of its authorities, or concerning the delimitation of its frontiers or boundaries. Dotted and dashed lines on maps represent approximate border lines for which there may not yet be full agreement.

Data Source:  
Global Influenza Surveillance and Response System (GISRS),  
FluNet (www.who.int/flu-net)

 **World Health Organization**  
© WHO 2019. All rights reserved.



# Percentage of respiratory specimens that tested positive for influenza By influenza transmission zone

Map generated on 14 August 2020



The boundaries and names shown and the designations used on this map do not imply the expression of any opinion whatsoever on the part of the World Health Organization concerning the legal status of any country, territory, city or area or of its authorities, or concerning the delimitation of its frontiers or boundaries. Dotted and dashed lines on maps represent approximate border lines for which there may not yet be full agreement.

Data source: Global Influenza Surveillance and Response System (GISRS), FluNet ([www.who.int/fluinet](http://www.who.int/fluinet))  
Copyright WHO 2020. All rights reserved.

# Testing and Treatment

- **Testing linked to intent to treat**
- Influenza PCR Panel
  - NP swab for influenza PCR testing
  - Reflexive subtyping and potential oseltamivir resistance
- **Hospitalized** with suspected or confirmed influenza
- Suspected or confirmed severe influenza illness, including signs of **lower tract infection** (pneumonia)
- Patients at high risk for influenza complications
  - **ALL pregnant women** (through 2 weeks postpartum)
- DO NOT test or treat patients with mild illness without risk factors for influenza complications





# Medications for Flu 1

## **Adamantanes**

- Amantadine
- Ramantadine



## **• Neuraminidase inhibitors**

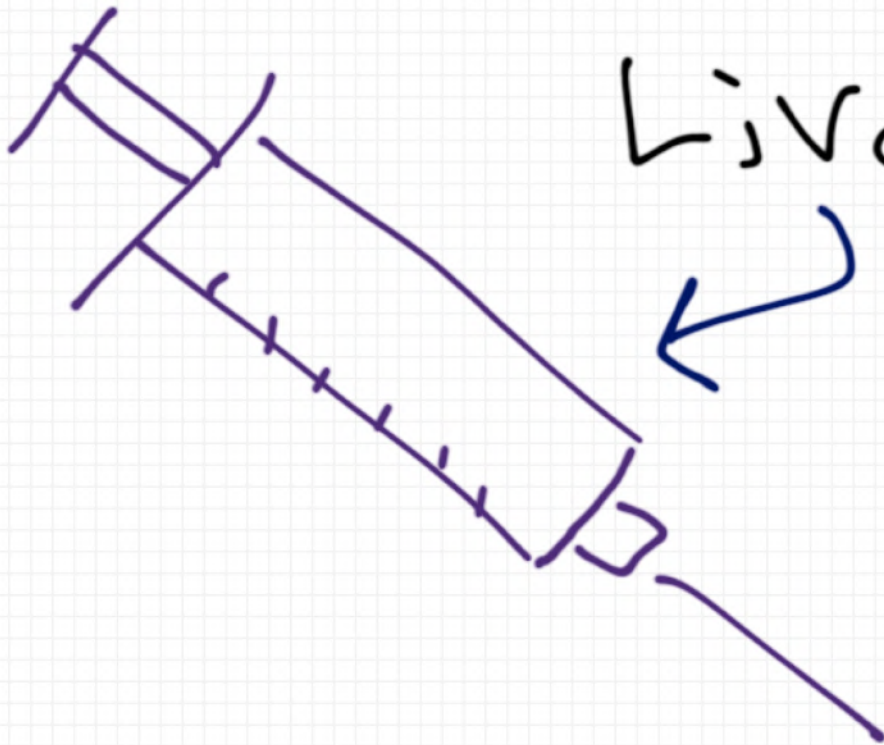
- Oseltamavir
- Zanamavir
- Peramavir

## **• Endonuclease Inhibitor**

- Baloxavir



Saves  
Lives



# the **benefits** of **flu vaccination** 2017-2018

The estimated number of flu **illnesses prevented by vaccination** during the 2017-2018 season:

**7**million

About the population of  
New York City



The estimated number of flu **hospitalizations prevented by vaccination** during the 2017-2018 season:

**109,000**

About the number of vehicles  
crossing the Golden Gate Bridge  
each day



The estimated number of flu **deaths prevented by vaccination** during the 2017-2018 season:

**8,000**

Twice the number of hospitals in  
the United States



DATA: Journal Clinical Infectious Disease, Effects of Influenza Vaccination in the United States during the 2017–2018 Influenza Season, <https://doi.org/10.1093/cid/ciz075>



get vaccinated  
[www.cdc.gov/flu](http://www.cdc.gov/flu)

# Prevention and Control of Seasonal Influenza with Vaccines: Recommendations of the Advisory Committee on Immunization Practices — United States, 2020–21 Influenza Season

*Recommendations and Reports* / August 21, 2020 / 69(8);1–24

Lisa A. Grohskopf, MD<sup>1</sup>; Elif Alyanak, MPH<sup>1,2</sup>; Karen R. Broder, MD<sup>3</sup>; Lenée H. Blanton, MPH<sup>1</sup>; Alicia M. Fry, MD<sup>1</sup>; Daniel B. Jernigan, MD<sup>1</sup>; Robert L. Atmar, MD<sup>4</sup> ([View author affiliations](#))

- A/Guangdong-Maonan/SWL1536/2019 (H1N1)pdm09-like virus (updated)
- A/Hong Kong/2671/2019 (H3N2)-like virus (updated)
- B/Washington/02/2019 (B/Victoria lineage)-like virus (updated)

**For quadrivalent vaccines +**

plus B/Phuket/3073/2013-like (Yamagata lineage) virus.





# Prevention and Control of Seasonal Influenza with Vaccines: Recommendations of the Advisory Committee on Immunization Practices — United States, 2020–21 Influenza Season

September 2020							October 2020						
Sun	Mon	Tue	Wed	Thu	Fri	Sat	Sun	Mon	Tue	Wed	Thu	Fri	Sat
		1	2	3	4	5					1	2	3
6	7	8	9	10	11	12	4	5	6	7	8	9	10
13	14	15	16	17	18	19	11	12	13	14	15	16	17
20	21	22	23	24	25	26	18	19	20	21	22	23	24
27	28	29	30				25	26	27	28	29	30	31

[www.a-printable-calendar.com](http://www.a-printable-calendar.com)



Trade name (Manufacturer)	Presentation	Age indication	HA (IIVs and RIV4) or virus count (LAIV4) for each vaccine virus (per dose )	Route	Mercury (from thimerosal) µg/0.5 mL
<b>IIV4</b>					
Standard dose, egg based <sup>†</sup> Afluria Quadrivalent (Seqirus)	0.25-mL PFS <sup>§</sup> 0.5-mL PFS 5.0-mL MDV <sup>§</sup>	6 through 35 mos ≥3 yrs ≥6 mos (needle/syringe) 18 through 64 yrs (jet injector)	7.5 µg/0.25 mL 15 µg/0.5 mL	IM <sup>¶</sup>	— — 24.5
Fluarix Quadrivalent (GlaxoSmithKline)	0.5-mL PFS	≥6 mos	15 µg/0.5 mL	IM <sup>¶</sup>	—
FluLaval Quadrivalent (GlaxoSmithKline)	0.5-mL PFS	≥6 mos	15 µg/0.5 mL	IM <sup>¶</sup>	—
Fluzone Quadrivalent (Sanofi Pasteur)	0.5-mL PFS** 0.5-mL SDV 5.0-mL MDV	≥6 mos ≥6 mos ≥6 mos	15 µg/0.5 mL	IM <sup>¶</sup>	— — 25
Standard dose, cell culture based (ccIIV4) Flucelvax Quadrivalent (Seqirus)	0.5-mL PFS 5.0-mL MDV	≥4 yrs ≥4 yrs	15 µg/0.5 mL	IM <sup>¶</sup>	— 25
High dose, egg based <sup>†</sup> (HD-IIV4) Fluzone High-Dose Quadrivalent (Sanofi Pasteur)	0.7-mL PFS	≥65 yrs	60 µg/0.7 mL	IM <sup>¶</sup>	—
Standard dose, egg based <sup>†</sup> with MF59 adjuvant (aIIV4) Fluad Quadrivalent (Seqirus)	0.5-mL PFS	≥65 yrs	15 µg/0.5 mL	IM <sup>¶</sup>	—
<b>IIV3</b>					
Standard dose, egg based <sup>†</sup> with MF59 adjuvant (aIIV3) Fluad (Seqirus)	0.5-mL PFS	≥65 yrs	15 µg/0.5 mL	IM <sup>¶</sup>	—
<b>RIV4</b>					
Recombinant HA Flublok Quadrivalent (Sanofi Pasteur)	0.5-mL PFS	≥18 yrs	45 µg/0.5 mL	IM <sup>¶</sup>	—
<b>LAIV4</b>					
Egg based <sup>†</sup> FluMist Quadrivalent (AstraZeneca)	0.2-mL prefilled single-use intranasal sprayer	2 through 49 yrs	10 <sup>6.5-7.5</sup> fluorescent focus units/0.2 mL	NAS	—



# Egg Allergy



# Flu and COVID-19

MANY UNKNOWNNS this year

- Will COVID and Flu be co-circulating in the community?
  - Likely YES
- Can one person get co-infected with both?
  - Likely YES
  - Does it matter? Maybe





# Audience Questions

Will your hospital mandate influenza vaccination for HCWs this season?

- 1) Yes
- 2) No
- 3) Don't know



# Audience Questions

How will your hospital manage the ongoing need for COVID testing & case investigation and influenza vaccination campaign? Isn't all the same people!?



# Discussion, questions, comments?

