



COVID-19 therapeutics update

- Ivermectin

October 12th, 2021

Ivermectin

- What: anti-parasitic (strongyloides, scabies)
- *In vitro*: antiviral (dengue, SARS-CoV2)
 - at concentrations >50-fold the anti-parasitic effect
- Pros: Older drug, available, \$

<https://academic.oup.com/cid/advance-article/doi/10.1093/cid/ciab591/6310839>



Guidelines	Ivermectin Recommendation	Website
National Institutes of Health	There is insufficient evidence for the COVID-19 Treatment Guidelines Panel (the Panel) to recommend either for or against the use of ivermectin for the treatment of COVID-19.	https://www.covid19treatmentguidelines.nih.gov/therapies/antiviral-therapy/ivermectin/
Infectious Diseases Society of America	Suggest against use except in a clinical trial	https://www.idsociety.org/practice-guideline/covid-19-guideline-treatment-and-management/
World Health Organization	We recommend not to use ivermectin in patients with COVID-19 except in the context of a clinical trial.	https://www.bmj.com/content/370/bmj.m3379
FDA and CDC	Recommend against	https://emergency.cdc.gov/han/2021/han00449.asp

The ivermectin story

in-vitro data indicating
some activity

Mar. 2020

Promising study out of
Egypt

Nov. 2020

Multiple reports of
poisoning

Aug. 2021

Dec. 2020

Senate hearing

July 2021

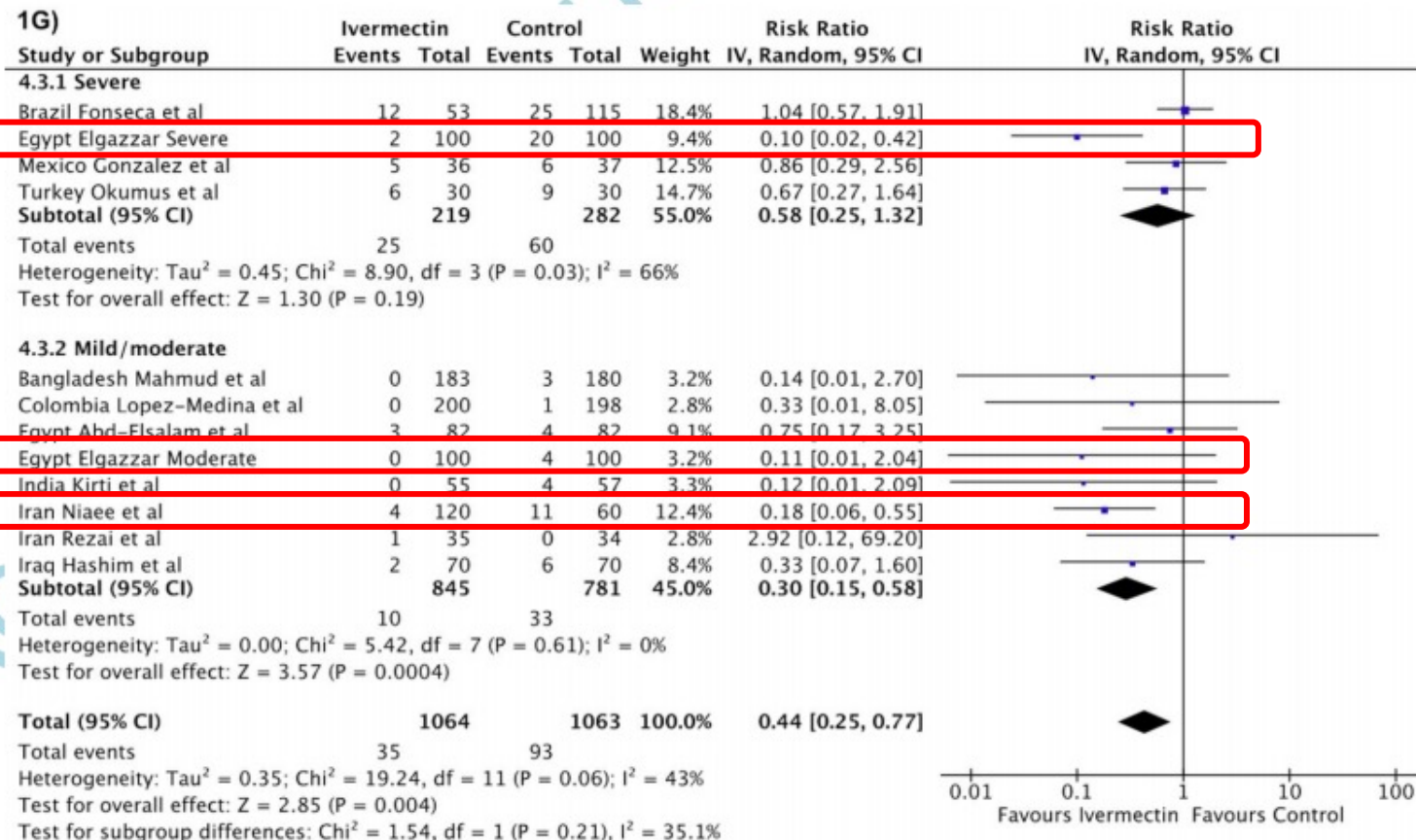
Study from Egypt
retracted



Egypt study retraction

Mortality: 35/1064 (3%) vs. 93/1063 (8.7%)

Figure 1G



<https://www.theguardian.com/science/2021/jul/16/huge-study-supporting-ivermectin-as-covid-treatment-withdrawn-over-ethical-concerns>

Lawrence, J.M., Meyerowitz-Katz, G., Heathers, J.A.J. *et al.* The lesson of ivermectin: meta-analyses based on summary data alone are inherently unreliable. *Nat Med* (2021). <https://doi.org/10.1038/s41591-021-01535-y>

New (old) data on Ivermectin

Open Forum Infectious Diseases

[Issues ▼](#)[More Content ▼](#)[Publish ▼](#)[Alerts](#)[About ▼](#)[All Open Forum Infectious ▼](#)

Article Contents

[Abstract](#)[Supplementary data](#)[Comments \(2\)](#)

ACCEPTED MANUSCRIPT

Meta-analysis of randomized trials of ivermectin to treat SARS-CoV-2 infection

Andrew Hill , Anna Garratt, Jacob Levi, Jonathan Falconer, Leah Ellis, Kaitlyn McCann, Victoria Pilkington, Ambar Qavi, Junzheng Wang, Hannah Wentzel

Open Forum Infectious Diseases, ofab358, <https://doi.org/10.1093/ofid/ofab358>

Published: 06 July 2021 **Article history ▼**

A correction has been published: *Open Forum Infectious Diseases*, Volume 8, Issue 8, August 2021, ofab394, <https://doi.org/10.1093/ofid/ofab394>

RETRACTED and will re-analyze data without fraudulent studies



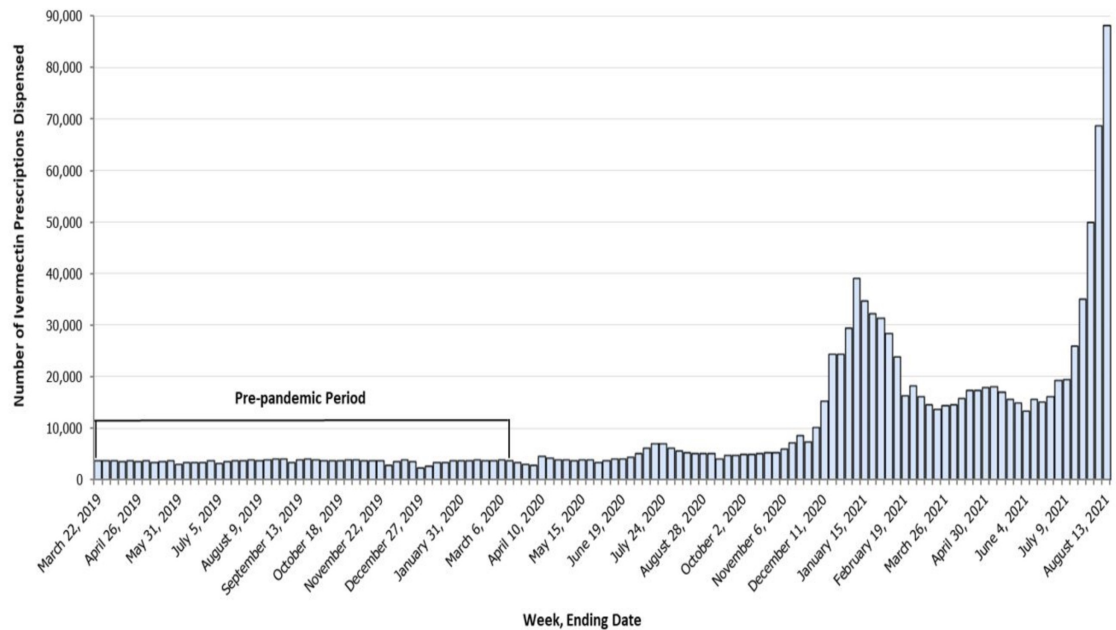
What is the harm?

Jan 2021, calls to US poison control up three-fold for human exposures to ivermectin

July 2021, ivermectin calls continued to sharply increase, to a five-fold increase from baseline

These reports are also associated with increased frequency of adverse effects and emergency department/hospital visits.

Estimated number of outpatient ivermectin prescriptions dispensed from retail pharmacies — United States, March 16, 2019–August 13, 2021*



Ongoing Clinical trials

PRINCIPLE- <https://www.principletrial.org/>

UK study evaluating Standard of care _{vs} Favipiravir (an antiviral drug) _{vs} ivermectin

ACTIV-6, Trial of Repurposed drugs (NIH sponsored)

15,000 participants

- Ivermectin _{vs} placebo
- Fluvoxamine _{vs} placebo
- Inhaled Fluticasone _{vs} placebo



Resources

CDC and FDA warnings

- <https://emergency.cdc.gov/han/2021/han00449.asp>

Data tables:

- <https://www.covid19treatmentguidelines.nih.gov/tables/table-2c/>
- <https://www.bmj.com/content/370/bmj.m3379>





Ivermectin



No suggested regimen
Trials used variable dosing strategies

Recommendation 1

Usual supportive care

Ivermectin

Strong

thebmj

covid-19 Research Education News & Views Campaigns Jobs



Patients with covid-19 at any severity

When for
uncertainty
In addition
there were
small number

Evidence profile



Favours usual supportive care

No important difference



Favours ivermectin

	Events per 1000 people			Evidence quality		
Mortality	70	No important difference	14	★★★★★	Very low	More
Mechanical ventilation	20	No important difference	10	★★★★★	Very low	More
Viral clearance at 7 days	500	118 more	618	★★★★★	Low	More
Admission to hospital	50	No important difference	18	★★★★★	Very low	More
Serious adverse events	9	18 fewer	27	★★★★★	Low	More
	Mean days			Evidence quality		
Time to clinical improvement	11.0	No important difference	10.5	★★★★★	Low	More
Duration of hospitalisation	12.8	No important difference	11.7	★★★★★	Very low	More
Time to viral clearance	7.3	No important difference	5.7	★★★★★	Very low	More

See all outcomes

MAGIC app

Fluvoxamine

There is **insufficient evidence** for the COVID-19 Treatment Guidelines Panel to recommend either for or against the use of fluvoxamine for the treatment of COVID-19.

small placebo-controlled trial, none of the participants who received fluvoxamine and six (8.3%) of those who received placebo reached the primary endpoint.

Limitations:

- study's reliance on participant self-reports
- missing data

Difficult to draw definitive conclusions about the efficacy of fluvoxamine for the treatment of COVID-19.



Ivermectin: no effect!



QUESTION What is the effect of ivermectin on duration of symptoms in adults with mild COVID-19?

CONCLUSION This randomized trial found that a 5-day course of ivermectin compared with

POPULATION

231 Women
167 Men



Adult patients with mild COVID-19 and symptoms for 7 days or fewer

Median age: 37 years

LOCATIONS

1 Site in Cali, Colombia



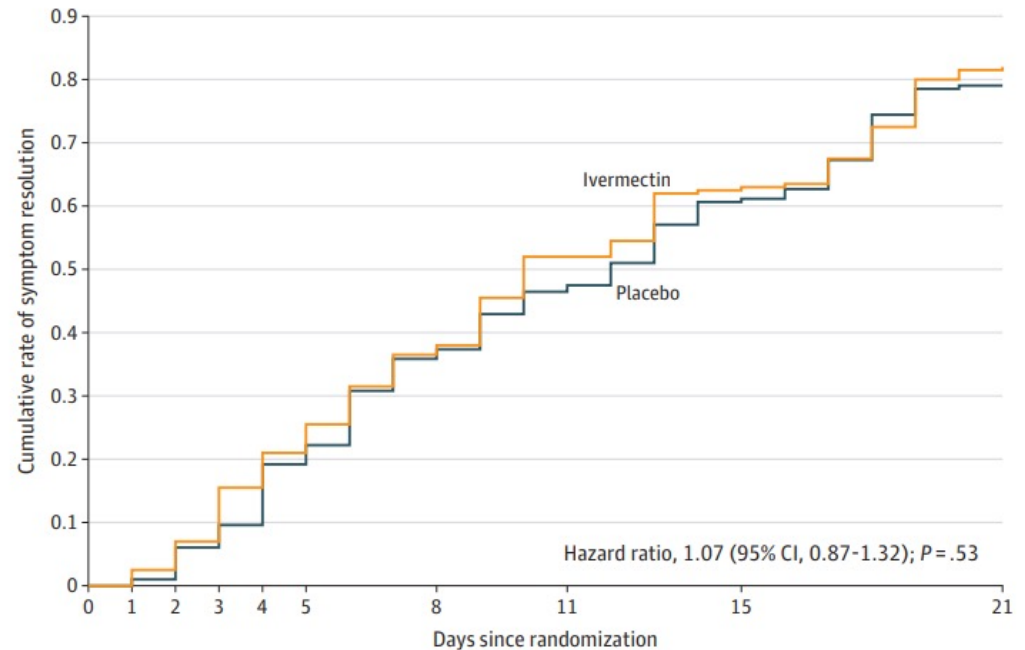
INTERVENTION



Ivermectin
Oral ivermectin
300 µg per day

DESIGN

Figure 2. Time to Resolution of Symptoms in the Primary Analysis Population



No. at risk																				
Ivermectin	200	195	186	169	158		127		96		75								37	
Placebo	198	196	186	179	160		127		106		77								41	

López-Medina E, López P, Hurtado IC, et al. Effect of ivermectin on duration of symptoms in adults with mild COVID-19: a randomized clinical trial. *JAMA*. Published online March 4, 2021. doi:10.1001/jama.2021.1001



IDSA and FDA weigh in

Overview of IDSA COVID-19 Treatment Guidelines

Version 4.1.0 – March 5, 2021

		Setting and severity of illness			
		Ambulatory care: mild-to-moderate disease	Hospitalized: mild-to-moderate disease without need for suppl. oxygen	Hospitalized: severe but non-critical disease (spO ₂ <94% on room air)	Hospitalized: critical disease (e.g., in ICU needing MV, or septic shock, ECMO)
17-18	Ivermectin	Suggests against use except in a clinical trial ⊕○○○	NA	Suggests against use except in a clinical trial ⊕○○○	NA

Why You Should Not Use Ivermectin to Treat or Prevent COVID-19

Subscribe to Email Updates

f Share

🐦 Tweet

in LinkedIn

✉ Email

🖨 Print



Content current as
03/05/2021

Regulated Product
Animal & Veterinary
Drugs

COVID-19. We've been living with it for what sometimes seems like forever. Given the number of deaths that have occurred from the disease, it's perhaps not surprising that



